



COMPANY PROFILE

BMI
BEST. MACHINERY. INNOVATOR.

01

COMPANY INTRODUCTION

BMI

BEST. MACHINERY. INNOVATOR.

OVERVIEW & HISTORY

Company name

BMI Co.,Ltd

CEO

Lee sang-yun

Home page

<http://www.bm-i.co.kr>

Founding date

September 1, 1997

Employee

36 (2026.02)

Headquarters

86, Dalseong2cha 1-ro, Guji-myeon, Dalseong-gun, Daegu, R.O.K

Factory 2

227, Gukgasandan-daero 33gil, Guji-myeon, Dalseong-gun, Daegu, R.O.K

Sales office

6-8, Seojeong 11-gil, Songsan-myeon, Dangjin-si, Chungcheongnam-do, R.O.K

Capital

KRW 225 million

Total sales

KRW 13.6 billion dollars (2025)

Sales Office

Headquarter, Factory 2



COMPANY ORGANIZATION

Our company has been working in domestic and overseas steel mills for over 30 years since its establishment in 1997.

We are a company specializing in mechanical equipment manufacturing that manufactures and supplies various equipment. In order to become a developing technology company, we established an automation division in 2014 and are manufacturing and supplying equipment in the engine/mission/secondary battery fields to domestic and foreign companies.

We are gradually accumulating experience in manufacturing steel equipment and automation equipment. To contribute to building smart factories in various industries of the future We are making progress.

01 Steel Machinery Dept.

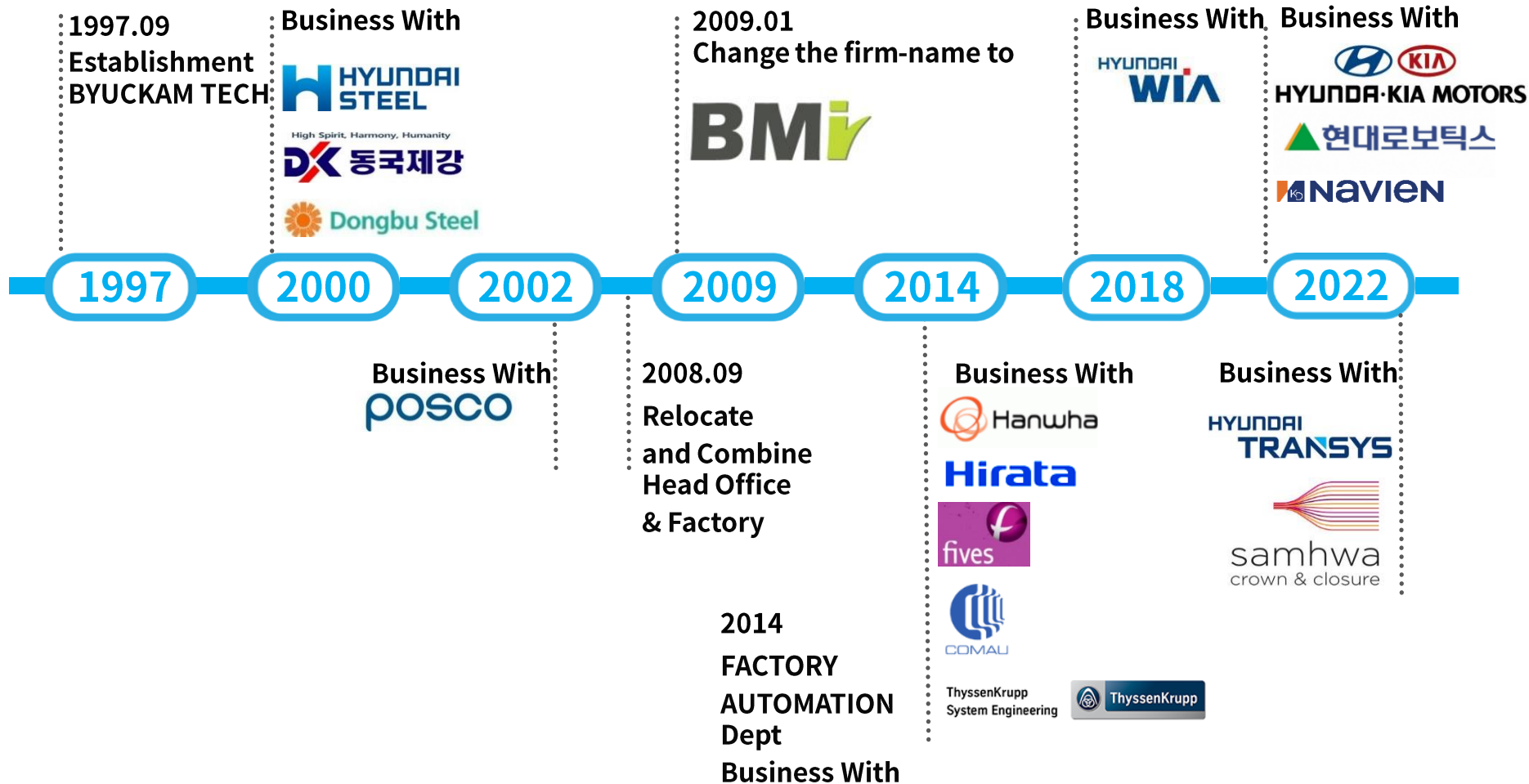
02 Factory Automation Dept.

03 Technical Sales Dept.

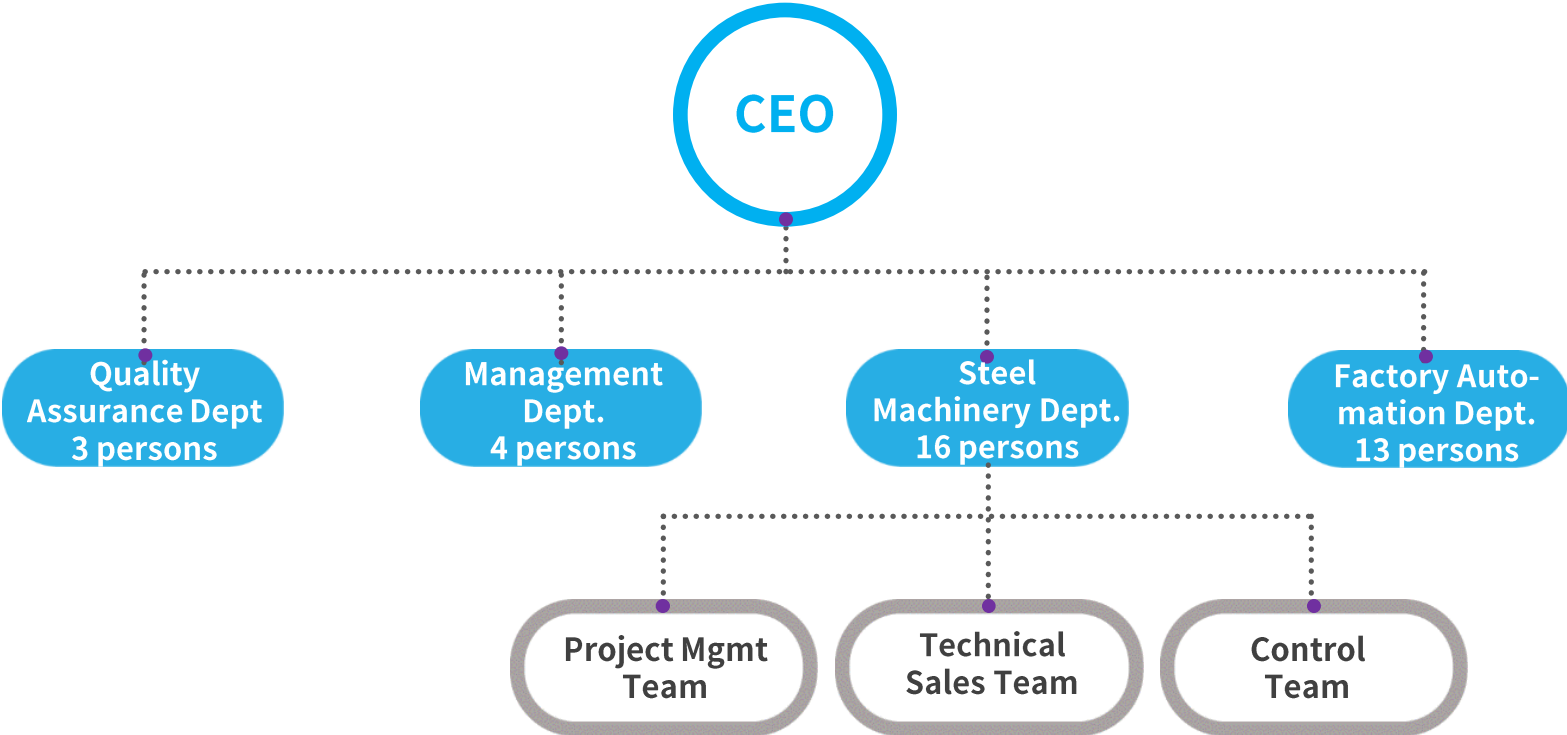
04 Management Dept.



KEY FACTS ABOUT BMI



ORGANIZATION CHART



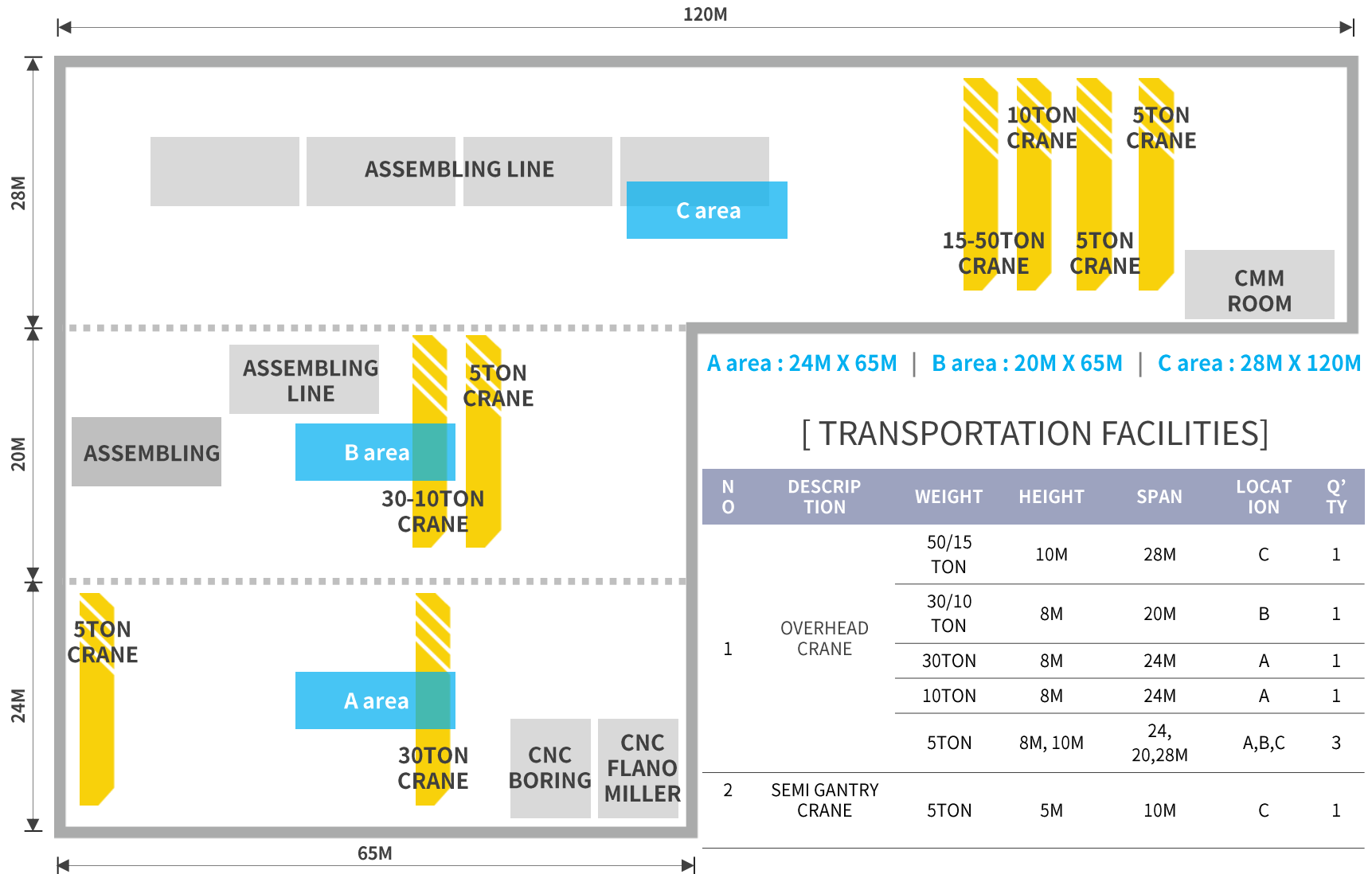
02

FACILITIES STATE

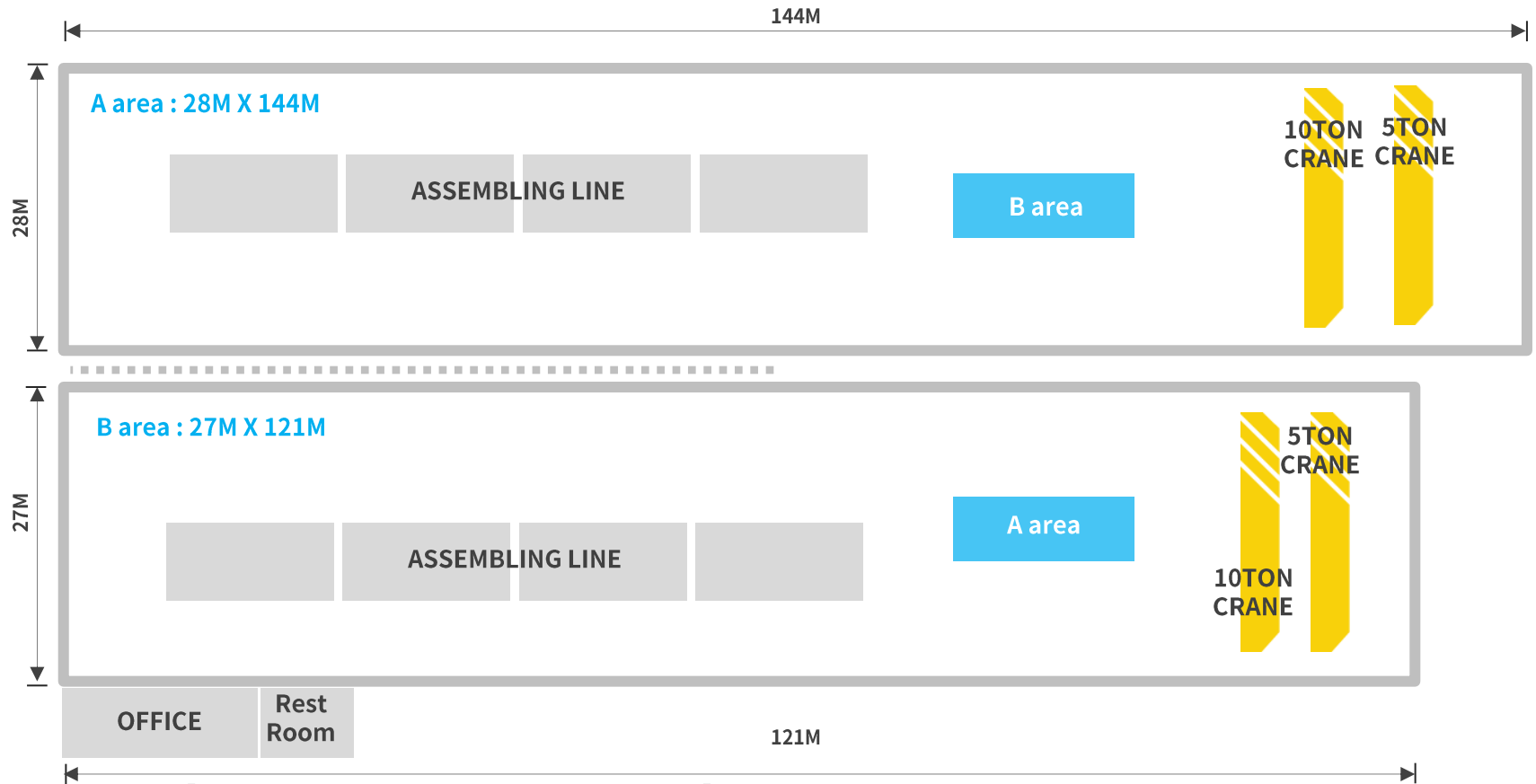
BMI

BEST. MACHINERY. INNOVATOR.

FACTORY LAYOUT



FACTORY LAYOUT_ FACTORY 2

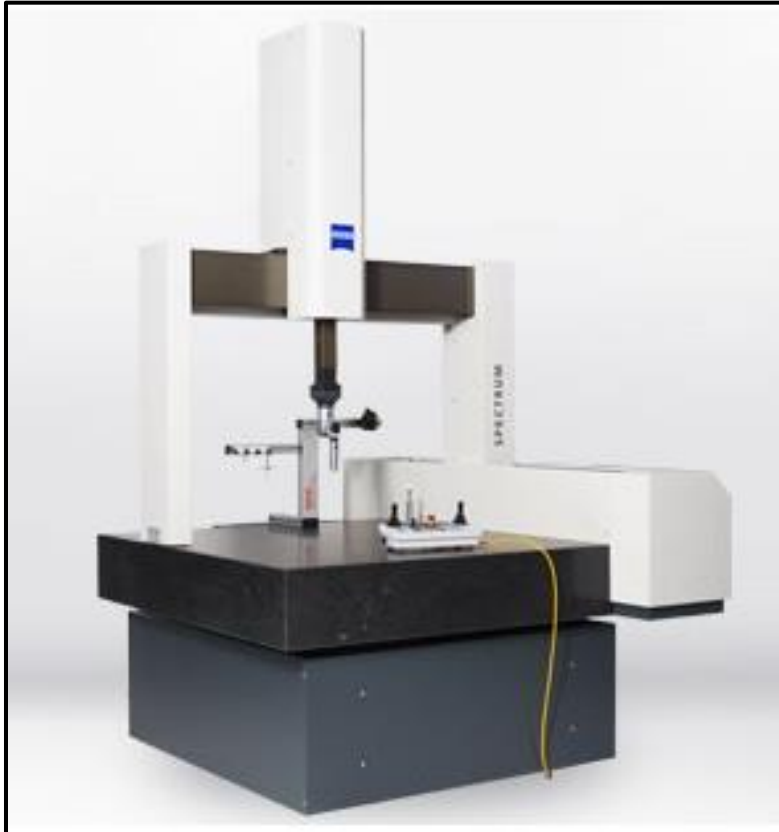


[TRANSPORTATION FACILITIES]

N O	DESCRIP TION	WEIGHT	HEIGHT	SPAN	LOCAT ION	Q' TY
1	OVERHEAD CRANE	10 TON	10M/7M	24M/25M	A,B	2
		5 TON	10M/7M	24M/25M	A,B	2

FACILITIES STATES

COORDINATE MEASUREMENT MACHINE (3D)



1. MAKER	ZEISS, GERMAN
2. MACHINE NAME	CONTURA G2
3. MEASURING RANGE	X = 1000 mm (39.3 in) Y = 1200 mm (47.2 in) Z = 600 mm (23.6 in)
4. ISO 10360-2	MPE_E = $(1.8 + L/350) \mu\text{m}$
5. PROBE	XDT TL3

03

RECORD

BMI
BEST. MACHINERY. INNOVATOR.

CURRENT RECORD(INTERNAL)

2019

NO	EQUIPMENT	Q'TY	CUSTOMER	YEAR
1	1Hot Strip Mill F2,3 Stripper frame Ass'y	1SET	HYUNDAI STEEL	
2	2Hot Strip Mill SSP Air Clutch	SET		
3	Hot Strip Mill Heating Furnace Top Lintel	SET		
4	Heavy Plate Mill Turntable Roll	2EA		
5	Heavy Section BlackDownMill Front MANIPULATOR	1SET		
6	Heavy Section Mill Saw Clamping Device	1SET		
7	ROLL Production Horizontality Bottom Flask	2EA		
8	Section Mill Run In Roller	2SET		
9	Section Mill 120T Weighing Table	SET		2019
10	Plate Mill SEGMENT FRAME	SET	HYUNDAI ROTEM	
11	CCM ROLLER BENDER FRAME For Fast Casting	5SET		
12	WITHDRAWAL FRAME ASS'Y(Straightener)	2SET	SEAHBE STEEL	
13	Heavy Plate Mill BLOOM TURNER	2SET		
14	FM Spindle Wobbler	2EA	DONGKUK STEEL	
15	IMR SHIFTING SYSTEM OVERHAUL	SET	DONGBU STEEL	
16	Steel Manufacture BILLET MOLD	SET	POSCO E&C	

CURRENT RECORD(INTERNAL)

2020

NO	EQUIPMENT	Q'TY	CUSTOMER	YEAR
1	Heavy Section RTM Guide change Platform SET	1SET	HYUNDAI STEEL	2020
2	Heavy Section In, Out Side Guide SET	2SET		
3	Section Mill 100T Support Frame	3EA		
4	Section Mill 80T Mold OSC Frame	1SET		
5	Section Mill 120T LF Refining Car ASS'Y	1SET		
6	Raw Material Drive Shaft SET	2SET		
7	STRIPPER ASS'Y	1SET		
8	Coil Box Bending Roll Frame ASS'Y	1SET		
9	Coil Box Leveller Roll Frame ASS'Y	1SET		
10	Coil Box Cradle Roll Frame ASS'Y	1SET		
11	FM Side Guide ASS'Y	1SET		
12	Plate Mill Segment Frame	15SET	HYUNDAI ROTEM	
13	Plate Mill Segment Frame	2EA	DONGKUK STEEL	
14	CCM Machine	22EA	POSCO E&C	
15	Bloom Turner	2SET	SEAHBE STEEL	
16	Cold Leveller Roll ASS'Y	1SET	DKC STEEL	

CURRENT RECORD(INTERNAL)

2021

NO	EQUIPMENT	Q'TY	CUSTOMER	YEAR
1	1Hot Strip Mill FM Side Guide ASS'Y	1SET	HYUNDAI STEEL	2021
2	1Hot Strip Mill F1 STRIPPER FRAME ASSY	1SET		
3	1Hot Strip Mill Coil Box Cradle Roll Frame ASS'Y	1SET		
4	FM Work Roll Chock Ass'y	1SET		
5	Coil Box Cradle Roll Frame ASS'Y	1SET		
6	1Hot Strip Mill FSB FRAME ASSY	1SET		
7	2Hot Strip Mill R1 STRIPPER&FEEDROLL	1SET		
8	Large Rolling RTM V CHOCK	1SET		
9	BEARING HOUSING	1SET		
10	1Hot Strip Mill F3 SIDE GUIDE FRAME ASSY	1SET		
11	2Hot Strip Mill R2 SLED	1SET		
12	2Hot Strip Mill E2 ROLL ADJUST ASSY	1SET		
13	BAR BREAKER ASS'Y	2EA	DAEHAN STEEL	
14	NO1 SEGMENT	1SET	DONGKUK STEEL	
15	FM Top Spindle Support Arm & LINK	2EA		
16	SKI LIFT ASS'Y		HANWHA	

CURRENT RECORD(INTERNAL)

2022

NO	EQUIPMENT	Q'TY	CUSTOMER	YEAR
1	SAW LINE TOOL REPLACEMENT SAFETY CONSTRUCTION	1SET		
2	1Hot Strip Mill CROP SHEAR KNIFE DRUM	1SET		
3	2Hot Strip Mill FSB FRAEM	1SET		
4	2Hot Strip Mill FM ENTRY FASSLINE ADJUSTMENT DEVICE ASSY	1SET		
5	Electric Furnace Upper Frame Replacement	1SET		
6	1Hot Strip Mill F7 SIDE GUIDE FRAME ASS'Y	1SET	HYUNDAI STEEL	
7	1Hot Strip Mill SSP HOLD DOWN ROLL (TOP,BOTTOM)	1SET		
8	120T BB3525 SEGMENT No1,2 Set	1SET		
9	FEED ROLL & HOUSIN	1SET		2022
10	1Hot Strip Mill FM FASSLINE ADJUSTENT DEVICE ASSY	1SET		
11	21YEAR CDQ , MOVABLE PLATFORM	1SET	HYUNDAI ROTEM	
12	BLM2 CONTINUOUS CASTING Withdrawal Assy	1SET	SEAHBE STEEL	
13	DKC OIL PRESSURE BRACE OVERHAUL	2EA	DKC STEEL	
14	STEEL VAR GENERAL STEEL RATIONALIZATION Roll Guide Part	1SET		
15	STEEL MANUFACTURE CONTINUOUS CASTING ROLLER APRON	2EA	DONGKUK STEEL	
16	JEM903-90041 JFE CHIBA COLD-ROLLED EQUIPMENT	1SET	BK ENG	

CURRENT RECORD(INTERNAL)

2023

NO	EQUIPMENT	Q'TY	CUCTOMER	YEAR
1	Manufacture of 120T steel BL150 segment and dummy bar dedicated body ASSY	12SET	HYUNDAI STEEL	2023
2	Production of RT and other new construction using 1 thick plate and 2 heat treatments	1SET		
3	TCM Backup Roll Choke Assy	1SET		
4	Steel bar rolling spindle supporter ASSY	1SET		
5	2nd hot rolled FSB FRAME ASSY repair	1SET		
6	1Hot rolled SSP hold down roll repair	1SET		
7	RTM E(NEW Ø500) H Choke Assy	1SET		
8	1st hot rolled FSB FRAME ASSY repair	1SET		
9	C-playing CT disc roller assembl	16SET		
10	Production of large 80T playing segment 500BB No1, No2	1SET	HYUNDAI ROTEM	
11	Rotem SSP Crankshaft Assembly	1SET		
12	LADLE TURRET ARM	1SET	SEAHBE STEEL	
13	Manufacture of steel bar rolling binding chain conveyor	2EA	Gwangmin Industry	
14	Steel NO2 SEGMENT ASSY	1SET	DONGKUK STEEL	
15	Vinecoil Movable Plate Assembly Overhaul	2EA		
16	2-performance 1MC rationalization BNDER, BOW, STRAIGHTENER SEGMENT production and delivery	1SET		POSCO e/c

CURRENT RECORD(INTERNAL)

2024

NO	EQUIPMENT	Q'TY	CUCTOMER	YEAR
1	Manufacturing of a 1-row FM passline adjustment device	1SET		
2	1-row SSP hold down roll	1SET		
3	2-row FSB frame	1SET		
4	Large Rolling Collecting Bed Chain Rail Frame SET	1SET		
5	Large 80T performance segment 500BB No.1, No.2	1SET		
6	Roll Production Department VSC Mold and Flask	1SET	HYUNDAI STEEL	
7	2-row R1 feed roll stripper ASSY	1SET		
8	Medium CM H-Chock Assy	1SET		
9	2-hot rolling furnace upper lintel	1SET		2024
10	Large Rolling CP7 Clamping Device SET	1SET		
11	1-row FM SIDE GUIDE ASSY production	1SET		
12	DKC acid loading table and transfer summer repair	1SET	DKC	
13	BLT#2 ZONE#4 FRAME	1SET	SEAHBE STEEL	
14	ROLLER APRON	1SET		
15	CS Factory Spooler Movable Plate Overhaul	2EA	DONGKUK STEEL	
16	2136 ROD MILL production	1SET	POSCO e/c	

CURRENT RECORD(INTERNAL)

2025

NO	EQUIPMENT	Q'TY	CUCTOMER	YEAR
1	Large Rolling RTM Lifting Roller Table	1SET		
2	New construction work other than RT with 2nd heat treatment of 1st plate	1SET		
3	1-heat FM SIDE GUDIE ASSY production and 3 other types	1SET		
4	Large 80T 500BB Segment No.1, No.2	1SET		
5	Large steel segment No. 1/3 assembly	4SET		
6	Repair of the 2-row FM passline adjustment device	1SET	HYUNDAI STEEL	
7	Large steel segment No. 1.3 assembly	3SET		
8	Large rolling shifting roller table	1SET		
9	1st hot-rolled SSP hold-down roll assembly repair	1SET		2025
10	Repair of the 1st hot-rolled FM pass line control device	1SET		
11	Large steel segment NO2 assembly	2SET		
12	Crop Shear Knife Drum ASSY	1SET	HYUNDAI ROTEM	
13	Gunsan) BLT#2 Intermediate Roller Table Improvement	1SET	SEAHBE STEEL	
14	3 summer repair projects: construction of the intermediate correction unit, AGM#1 rail, and TOD#1 base	1SET		
15	Demolition of the DKC cutting unit 1 bed and extension of the scrap conveyor	1SET	DKC	
16	FM Sledge Life Extension Breeding Processing	1SET	DONGKUK STEEL	

실적현황 [해외]

2008-2023

NO	EQUIPMENT	Q'TY	CCUTOMER	YEAR
1	PINCH ROLL FOR BOTTOM	2SET	SAHAVIRIYA / THAILAND	2011
2	WORM GEAR SCREW DOWN ASS'Y	2SET	SIAM YAMATO STEEL / THAILAND	2012
3	V-SCREW SHAFT & NUT	2SET	SIAM YAMATO STEEL / THAILAND	2013
4	SYS CRANK SHAFT & SCREW SET	2SET	SIAM YAMATO STEEL / THAILAND	2014
5	CHOCK & MANDREL SEGMENT	1SET	World-Trade & Engineering/ MALAYSIA	2016
6	CRANK SHAFT & PENDULUM FRAME	4SET	G-STEEL / THAILAND	2017
7	Water cooled brakets	5SET	MISIMACOSAN / JAPAN	2018
8	SYS BB400 SEGMENT ASS'Y	4SET	SIAM YAMATO STEEL / THAILAND	
9	UR MILL YOKE ASS'Y	1SET	G-STEEL / THAILAND	2019
10	MANDREL SEGMENT	4SET	World-Trade & Engineering / MALAYSIA	
11	CGL UACJ #1 CALP	1SET	BK ENG(SPCO) / JAPAN	2020
12	SECTION MILL SEGMENT FRAME	2EA	SIAM YAMATO STEEL / THAILAND	
13	STATIC CAST CHOCK SET	1SET	Atlas Machine & Supply, Inc./USA	2021
14	COMAU ARCH & Z COMPLIANCE	1SET	COMAU USA/ USA	
15	BL SEGMENT	1SET	SIAM YAMATO STEEL / THAILAND	2022
16	F2 SIDE GUIDE	1SET	NS TEX ENG/JANPAN	2023
17	BEARING BLOCK	1SET	FIVES ST CORP/USA	
18	COUPLING	6PC	EREGLIIRON&STEEL WORKS/TURKIYE	2024
19	NO2/3 SEGMENT	1SET	SIAM YAMATO STEEL / THAILAND	
20	ROLLER AMD CHOCK	8SET	JINDAL STEEL / INDIA	2024

04

STEEL MANUFACTURE MACHINERY Dept.

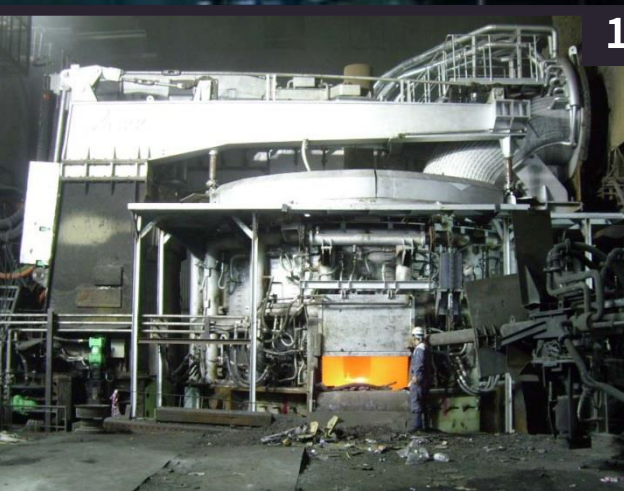
MAKING STEEL PLANT

CONTINUOUS CASTING PLANT

PLATE MILL LINE

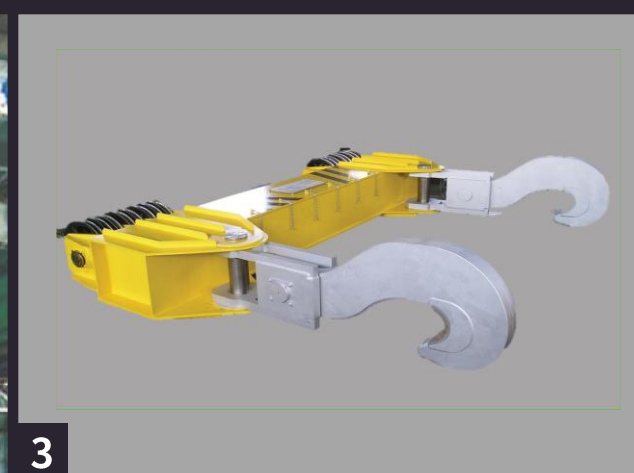
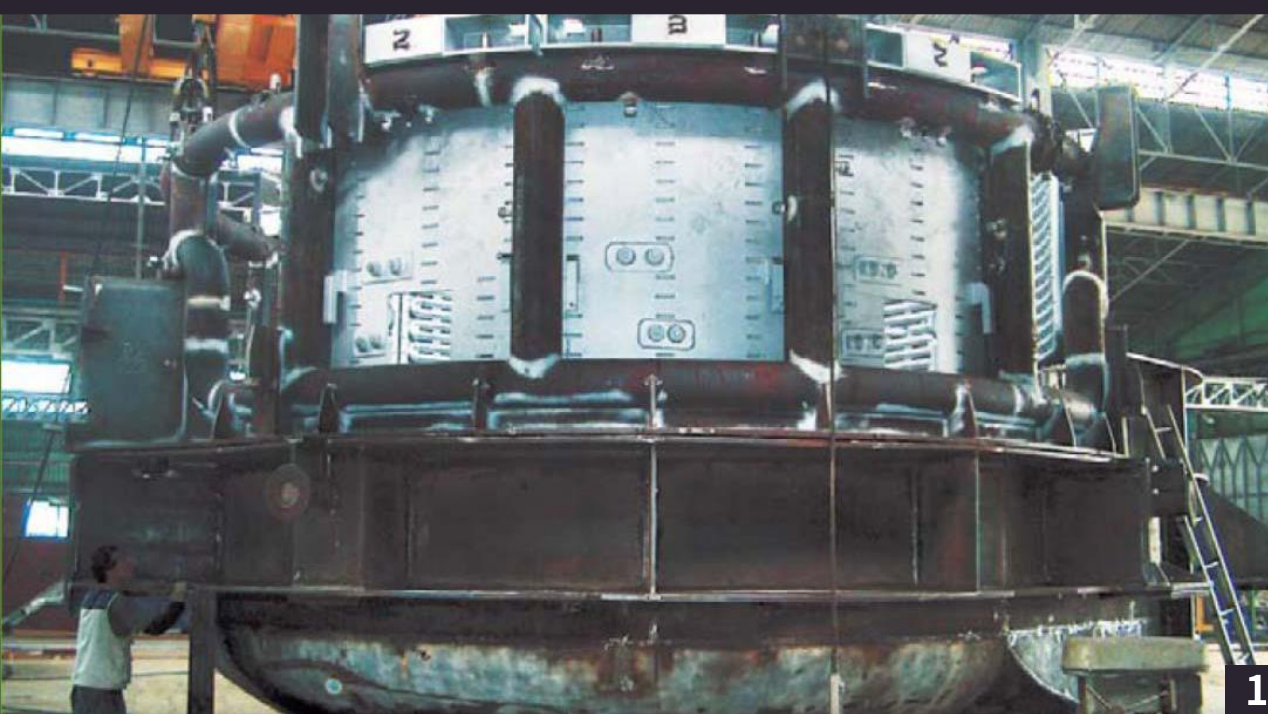
HOT STRIP MILL LINE

SECTION MILL LINE



MAKING STEEL PLANT

1. 150Ton Electric Furnace
2. 80Ton Electric Furnace Gantry
3. 120Ton LF 천정 Mast
4. 80Ton Electric Furnace Low Shell

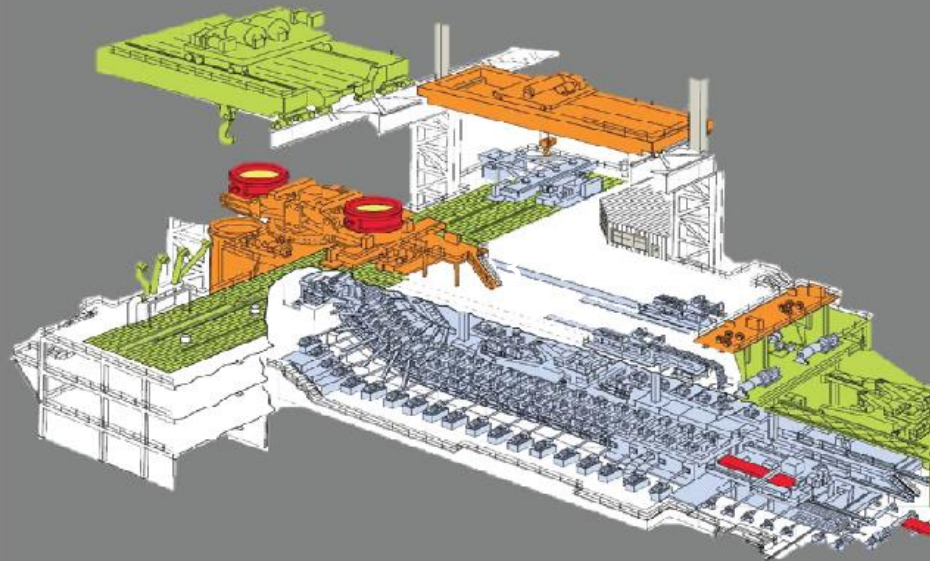


MAKING STEEL PLANT

1. 100Ton Electric Furnace
2. 100Ton Electric Furnace Top Shell
3. 120Ton Laminated Hook
4. 75Ton Charge truck



1



2



3



CONTINUOUS CASTING PLANT

1. Slab Dummy Bar
2. 400x520x140 Beam Blank Segment
3. Mould & Oscillator Localization (POSCO)



CONTINUOUS CASTING PLANT

1. Slab Segment
2. Discharger Roller Table
3. Withdrawl & Straightening Equipment

1



Hot Strip Mill

1. FM ORP Frame Ass'y
2. FM Side Frame Ass'y



1



3



4



2

Hot Strip Mill

1. Down Coil Line Design
Production Installstion
2. Charging Rack Bar Ass'y
3. FSB Frame Ass'y
4. WR Changing Device Ass'y



1



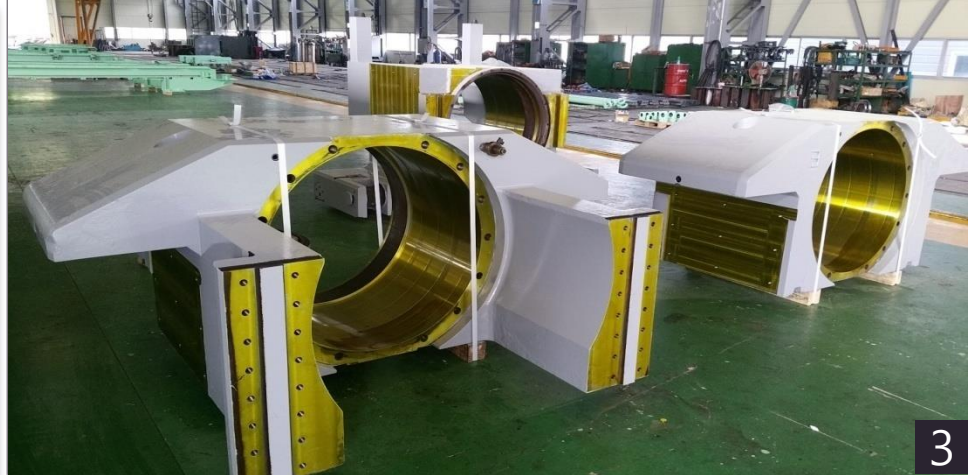
2

Plate Mill Line

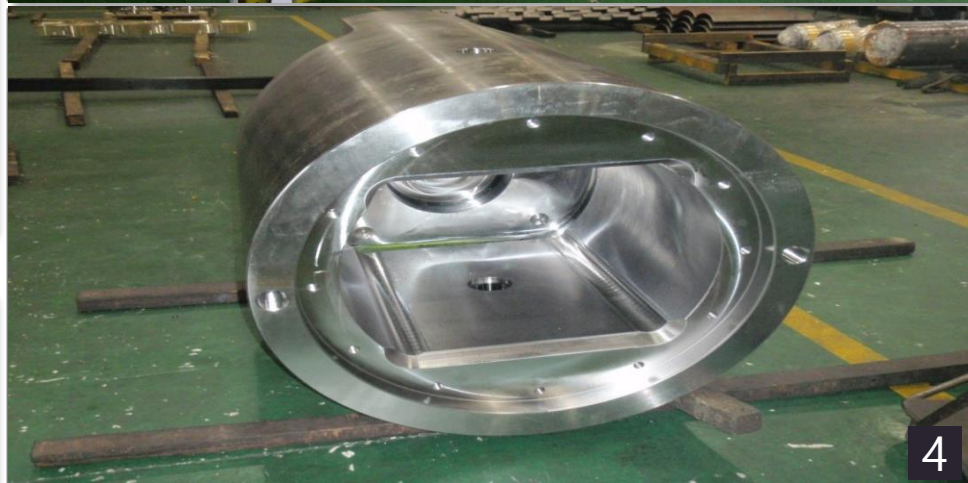
1. Roller Table Ass'y
2. FM Feed Roller Ass'y



1



3



4



2

PLATE MILL LINE

1. Hot Leveller Cassette Ass'y
2. FM Mill Guide Ass'y
3. Work Roll Chock
4. Work Roll Coupling



Section Mill Line

1. Roughing & Finishing Train(1,000ton)

Section Mill 120T LF Refining Car Ass'y

1. Section Mill 120T LF Refining Car Ass'y



FM Side Guide Ass'y

1. FM Side Guide Ass'y





1



2



3

Coil Box Roll Frame

1. Coil Box Bending Roll Frame Ass'y
2. Coil Box Leveller Roll Frame Ass'y
3. Coil Box Cradle Roll Frame Ass'y



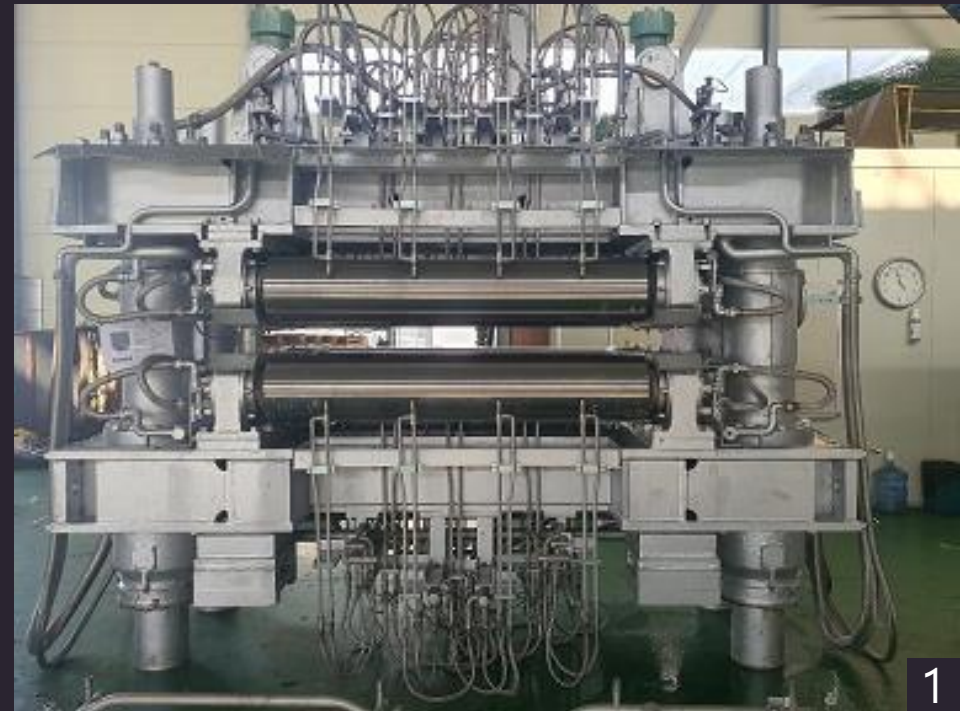
Posco E&C CCM Machine

1. Posco E&C CCM Machine

1



1



1

HYUNDAI STEEL

1. 3CGL TERMINAL EQUIPMENT
2. 120T BL 150 SEGMENT
3. 120T TRANSFER CAR



1



3



2



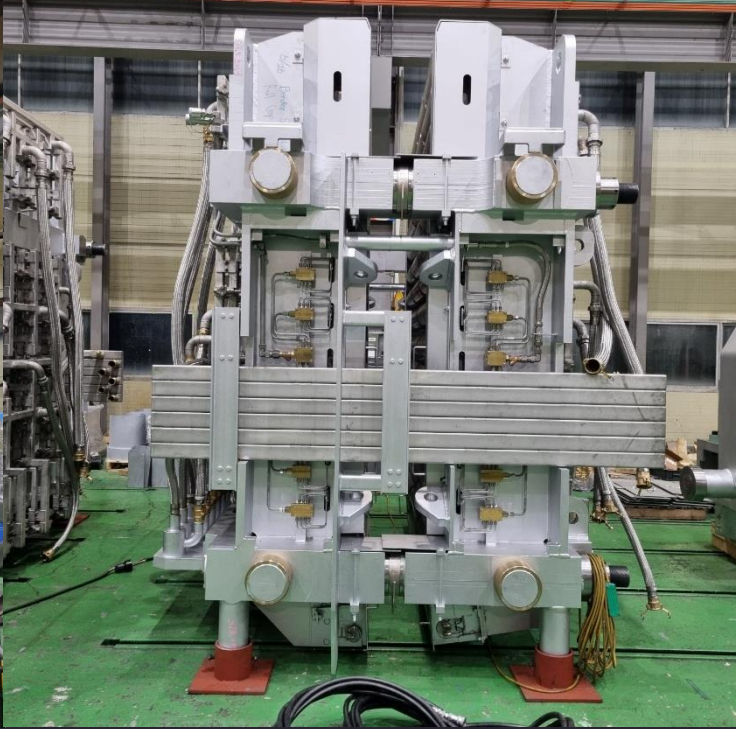
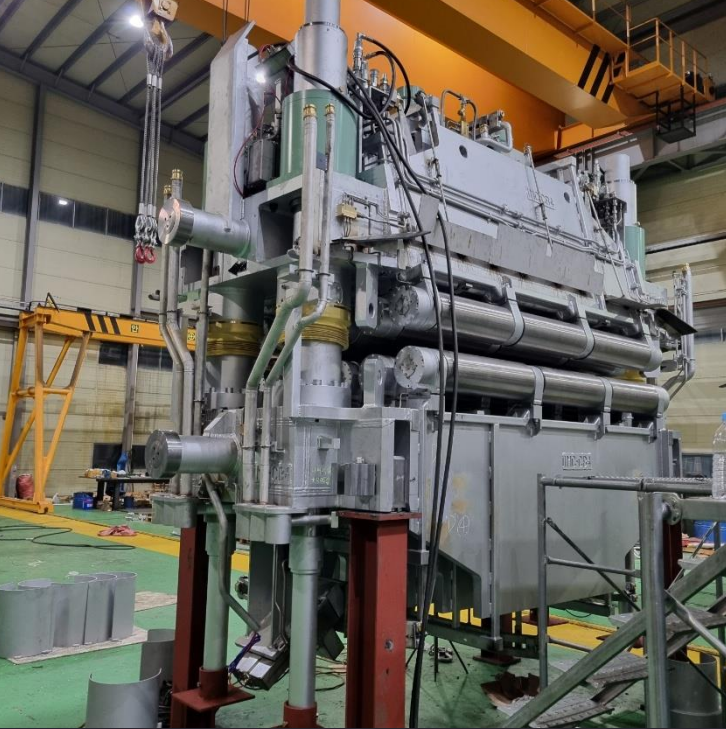
1

ROLLER TABLE ASSY

1. CHIN TRANSFER & ROLLER TABLE
2. PLATE MILL ROLLER TABLE



2



POSCO E&C SEGMENT

1. SEGMENT





ROTEM CDQ MOVABLE PLATFORM

1. CDQ MOVABLE PLATFORM

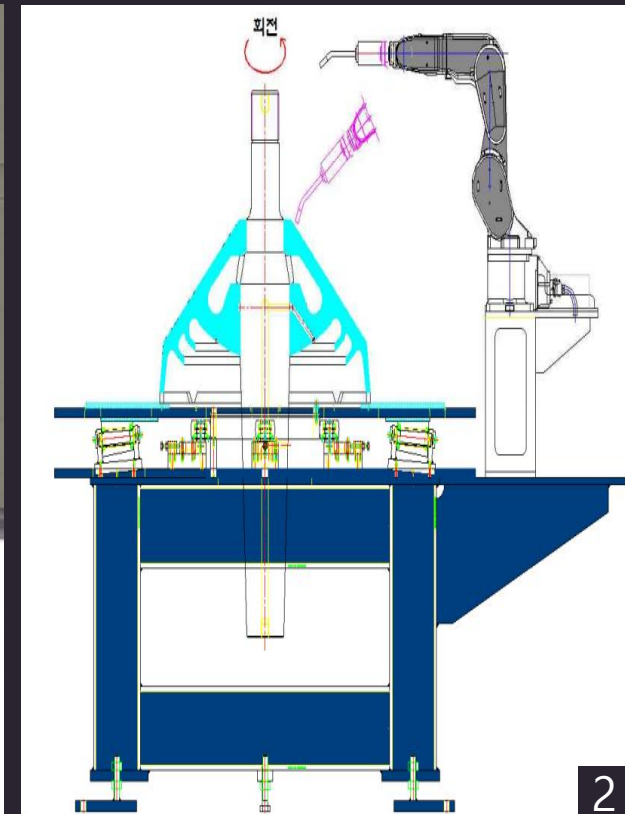


05

RESEARCH AND DEVELOPMENT

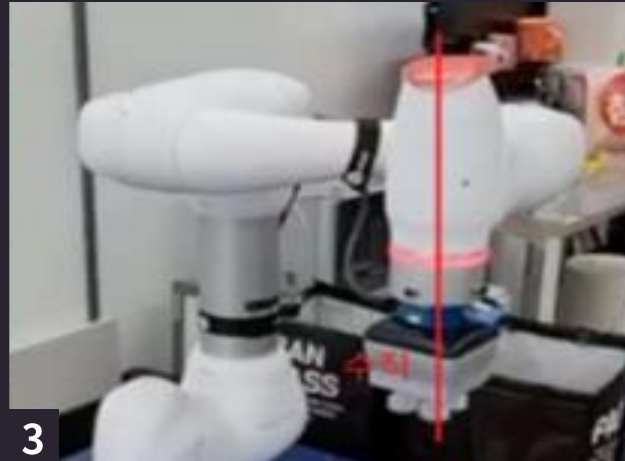
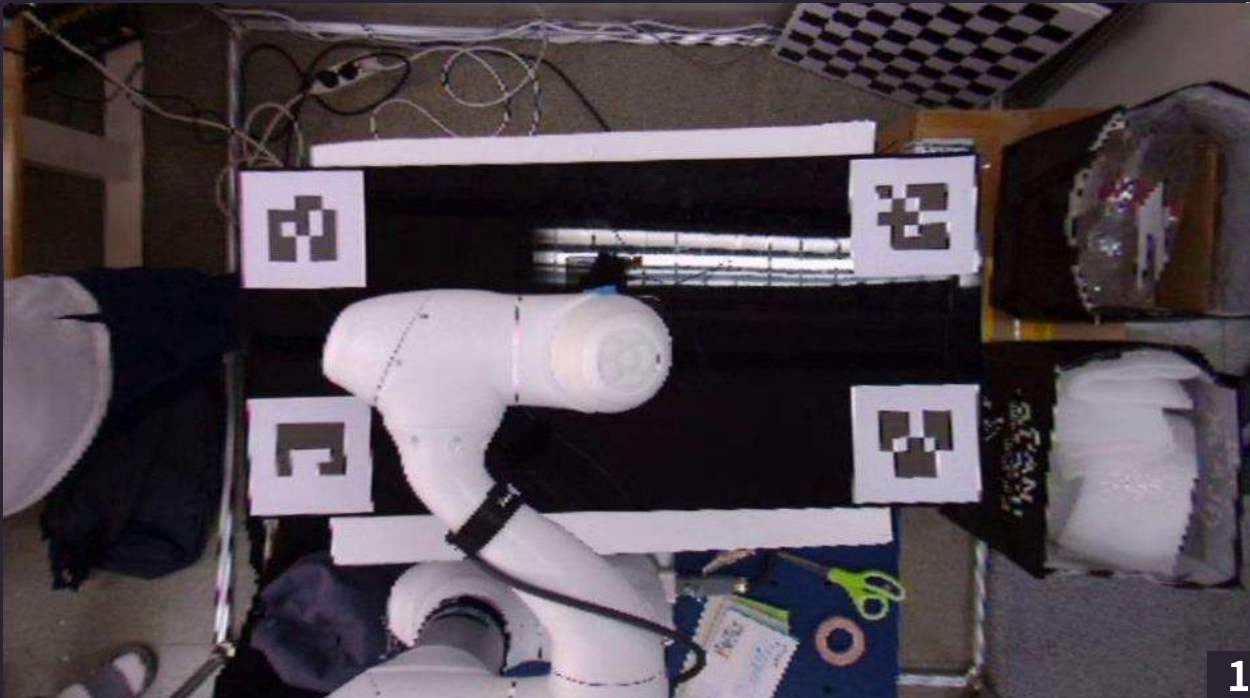
BMI

BEST. MACHINERY. INNOVATOR.



Based on multi-joint robot
Establishment of automatic
welding system (2020)

1. Multi-joint automatic welding system
2. Multi-joint automatic welding system concept



3

개발자이브 > 에디박스AI

두다지·비엠아이, 3D 기반 폐플라스틱 선별 로봇 시스템 개발

최종석 기자
입력 2022.11.02 11:48

시 양에 허브 입주기업 두다지가 로봇 자동화 기업 비엠아이와 함께 처음으로 폐플라스틱을 선별할 수 있는 인공지능(AI) 기반 로봇을 개발했다고 2일 밝혔다.

1
2

4

합이 본 뉴스

- 1 안철수 vs 대선... 이재명의 '뉴왕성' 이쯤 첫 원광인사 임박
- 2 대우조선 인수 작업 순항중... 영포병단 노조 "원상실시 지지 없다"
- 3 전세계 '빅데이' 화소... 이미지2차, 점주에 공급자 절반 부상
- 4 미국에 공장 짓는 TSMC, 핵심 기술은 대만에 있다
- 5 200만달러인 갤럭시4, 출시 2달만에 단권마켓서 120만원에 팔려

FRIENDS SCREEN
오늘 내일,
스크린 골프
창업

두다지는 AI 플랫폼 전문 업체로, 로봇의 눈 역할을 하는 딥러닝 비전 AI 모델을 개발했다. 이 딥러닝 모델은 단순히 새물을 폐기물을 감지할 뿐 아니라 3차원 정보를 함께 사용해 교점이 정확한 폐기물의 위치를 파악할 수 있다.



4

For automatic sorting of recycled waste Development of deep learning-based robot system (2022)

1. Depth inference task
2. Robot demonstration
3. Reference point correction
4. Prototype press release

Realtime Robot Operation Over 5G Network

Vision 5G Network MEC

Network Speed: 50Gbyte (Min)

Packet Bandwidth: 50Gbyte (Min)

IoT Health Check: 50Gbyte (Min)

Edge Computing Performance Glance

Job Order Monitoring

AudMig: Initializing upgrade diagnostics for first run
 AudMig: Upgrade defaults copied to final destination, migration data deleted
 AudMig: Enabling migration diagnostics
 AudMig: No audio interfaces in the system, large diagnostics timer enabled
 AudMig: Migration diagnostics reset due to activity
 AudMig: Migration diagnostics reset due to activity
 AudMig: Device Ids perfect match - [2]\{?}intelaudio#func_01&ven_10ec&dev_0298&subsys_1854040

거점별 네트워크 현황

2021.05.29 PM 15:24

데이터 네트워크 보이스 네트워크 특화 네트워크

현황

장대 (2)	정상	장대 (2)	장대 (2)	경대 심리드	변경 작업	서비스 수준
S0	S1	S2	S3	요청	완료	지연
1	0	2	0	0	0	1

97% 4.0 5D

276

설비 가능 현황

2021.05.29 PM 15:21

1st Block 종합 수질 건량도

수질건량도 94.5%

설비건량도 89.4%

이상감지예지보전 알림

구분	구분	구분	구분	구분	구분
Assembly	10000	9 2 3 6	Process	88	
Foaming	10000	9 5 1 3	WAIT	5	
Vacuum	10000	7 7 1 1	PM	3	
Detecting by electric	10000	7 4 7 8	MAINT	4	
Packaging	10000	5 1 2 8	DOWN	3	
			Unkonw	4	

Equipment Status Monitoring

Factory Monitoring Board

2016-05-27

Information Factory Line Detail

EQP Parameter

FPC_H_PRB_TAC_TIME	2.4 sec
FPC_PRODUCT_CNT	112 EA
FPC_STATUS	UP
ACLV_PRES_CR_PV	1.03 kcal
FPC_RD_PRESS_PV	2.19 kcal

Cycle Time: 3 M/sec

Unit Per Hour: 30 EA

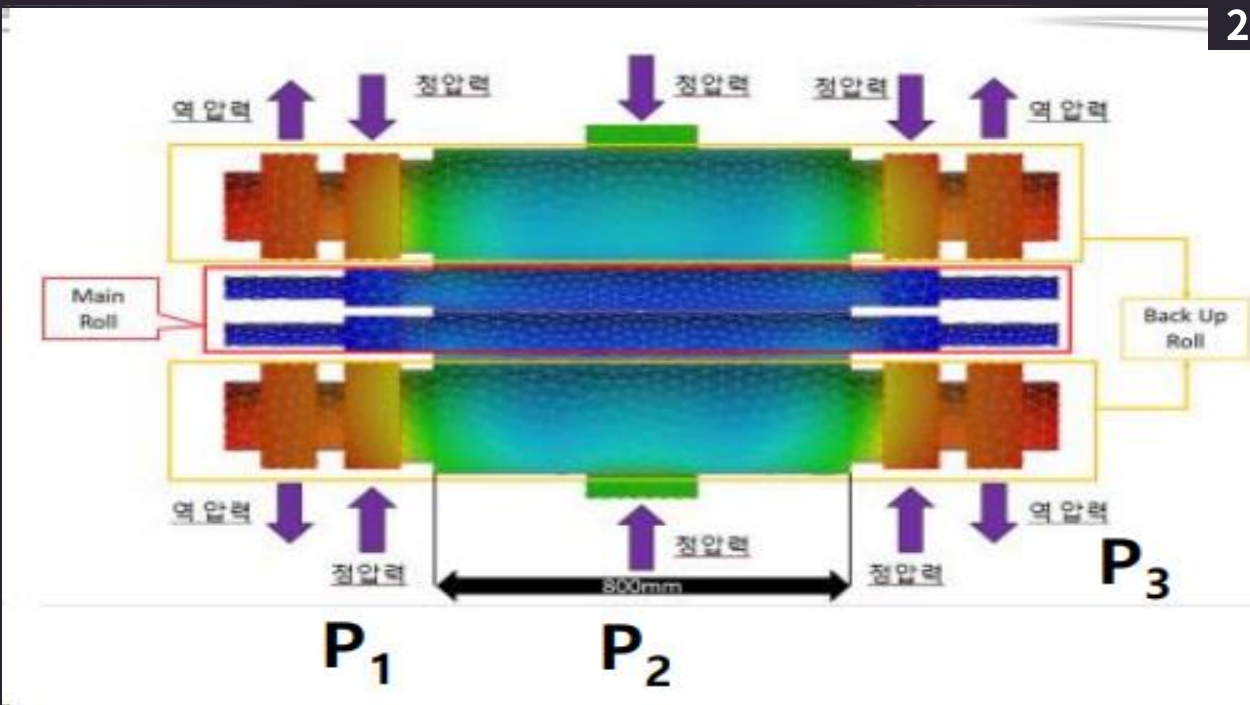
Rate Of Operation: 38 %

Quantity: 330 EA

Operation rate of Equipment: 83%

Demonstration of 5G-based MEC service Reference development (2023)

1. Realtime Robot Operation Over 5G Network
- 2,3,4. Monitoring system



1
2

4
350Wh/kg class high line voltage/high speed Development of wide Multi Roll Smart Press system(2022~2025)

- 1. Multi Roll Press hydraulic cylinder
- 2. Multi Roll pressure analysis
- 3. Roll Press Frame
- 4. Multi Roll Press servo

06

CERTIFICATION

BMI

BEST. MACHINERY. INNOVATOR.

특허증
CERTIFICATE OF PATENT

특허 제 10-2241935 호
Patent Number 제 10-2241935 호

발명번호 제 10-2020-0151639 호
Application Number 제 10-2020-0151639 호

출원일 2020년 11월 13일
Filing Date 2020년 11월 13일

공개일 2021년 04월 13일
Publication Date 2021년 04월 13일

발명의 명칭 Title of the Invention
나사대발톱의 발명

특허권자 Inventor
주식회사 비엠아이(17011-0*****)
대구광역시 달성군 구지면 달성2리 86

발명자 Inventor
주식회사 비엠아이(17011-0*****)
대구광역시 달성군 구지면 달성2리 86

2021년 04월 13일
특허청장
COMMISSIONER
KOREAN INTELLECTUAL PROPERTY OFFICE
김용래

특허청
Korean Intellectual Property Office

위의 발명은 「특허법」에 따라 특허권원부에 등록되었음을 증명합니다.
This is to certify that, in accordance with the Patent Act, a patent for the invention has been registered at the Korean Intellectual Property Office.

<특 허 증>

특허증
CERTIFICATE OF PATENT

특허 제 10-2301135 호
Patent Number 제 10-2301135 호

발명번호 제 10-2021-0071915 호
Application Number 제 10-2021-0071915 호

출원일 2021년 06월 03일
Filing Date 2021년 06월 03일

공개일 2021년 09월 06일
Publication Date 2021년 09월 06일

발명의 명칭 Title of the Invention
수평대차식 출력저수정기의 회어 무해감지장치

특허권자 Inventor
주식회사 비엠아이(17011-0*****)
대구광역시 달성군 구지면 달성2리 86

발명자 Inventor
주식회사 비엠아이(17011-0*****)
대구광역시 달성군 구지면 달성2리 86

2021년 09월 06일
특허청장
COMMISSIONER
KOREAN INTELLECTUAL PROPERTY OFFICE
김용래

특허청
Korean Intellectual Property Office

위의 발명은 「특허법」에 따라 특허권원부에 등록되었음을 증명합니다.
This is to certify that, in accordance with the Patent Act, a patent for the invention has been registered at the Korean Intellectual Property Office.

<특 허 증>

특허증
CERTIFICATE OF PATENT

특허 제 10-2294116 호
Patent Number 제 10-2294116 호

발명번호 제 10-2021-0025615 호
Application Number 제 10-2021-0025615 호

출원일 2021년 02월 25일
Filing Date 2021년 02월 25일

공개일 2021년 06월 20일
Publication Date 2021년 06월 20일

발명의 명칭 Title of the Invention
체인팅 개진기

특허권자 Inventor
주식회사 비엠아이(17011-0*****)
대구광역시 달성군 구지면 달성2리 86

발명자 Inventor
주식회사 비엠아이(17011-0*****)
대구광역시 달성군 구지면 달성2리 86

2021년 06월 20일
특허청장
COMMISSIONER
KOREAN INTELLECTUAL PROPERTY OFFICE
김용래

특허청
Korean Intellectual Property Office

위의 발명은 「특허법」에 따라 특허권원부에 등록되었음을 증명합니다.
This is to certify that, in accordance with the Patent Act, a patent for the invention has been registered at the Korean Intellectual Property Office.

<특 허 증>

특허증
CERTIFICATE OF PATENT

특허 제 10-1482058 호
Patent Number 제 10-1482058 호

발명번호 제 10-2013-0042788 호
Application Number 제 10-2013-0042788 호

출원일 2013년 04월 18일
Filing Date 2013년 04월 18일

공개일 2015년 01월 07일
Publication Date 2015년 01월 07일

발명의 명칭 Title of the Invention
에어 제압용 공작 시스템

특허권자 Inventor
주식회사 비엠아이(17011-0*****)
대구광역시 달성군 구지면 달성2리 86

발명자 Inventor
주식회사 비엠아이(17011-0*****)
대구광역시 달성군 구지면 달성2리 86

2015년 01월 07일
특허청장
COMMISSIONER
KOREAN INTELLECTUAL PROPERTY OFFICE
김양민

특허청
Korean Intellectual Property Office

위의 발명은 「특허법」에 따라 특허권원부에 등록되었음을 증명합니다.
This is to certify that, in accordance with the Patent Act, a patent for the invention has been registered at the Korean Intellectual Property Office.

<특 허 증>

실용신안등록증
CERTIFICATE OF UTILITY MODEL REGISTRATION

등록 제 20-0269282 호
REGISTRATION NUMBER 제 20-0269282 호

출원번호 제 2014-12월 09일
Application No. 2014-12월 09일

공개번호 제 2020년 04월 13일
Publication No. 2020년 04월 13일

고안의 명칭 TITLE OF THE DEVICE
신상용 환풍기

실용신안권자 OWNER OF THE UTILITY MODEL RIGHT
주식회사 비엠아이(17011-0*****)

고안자 INVENTOR
비엠아이(17011-0*****)
대구광역시 달성구 구지면 달성2리 86

2020년 03월 24일
특허청장
COMMISSIONER
KOREAN INTELLECTUAL PROPERTY OFFICE
김용래

이 실용신안권은 「실용신안법」 제44조제1항, 제45조제1항에 따른 실용신안등록을 받은 것이므로 실용신안권으로서 특허권의 대항력이 그 효력을 발생시킬 수 있습니다.

<실용신안>

실용신안등록증
CERTIFICATE OF UTILITY MODEL REGISTRATION

등록 제 20-0267624 호
REGISTRATION NUMBER 제 20-0267624 호

출원번호 제 2016-12월 09일
Application No. 2016-12월 09일

공개번호 제 2021년 09월 06일
Publication No. 2021년 09월 06일

고안의 명칭 TITLE OF THE DEVICE
벤치프레스 테이블용 디스크 교체장치

실용신안권자 OWNER OF THE UTILITY MODEL RIGHT
주식회사 비엠아이(17011-0*****)

고안자 INVENTOR
비엠아이(17011-0*****)
대구광역시 달성구구신상동 361-4번지 108호

2021년 09월 24일
특허청장
COMMISSIONER
KOREAN INTELLECTUAL PROPERTY OFFICE
김용래

이 실용신안권은 「실용신안법」 제44조제1항, 제45조제1항에 따른 실용신안등록을 받은 것이므로 실용신안권으로서 특허권의 대항력이 그 효력을 발생시킬 수 있습니다.

<실용신안>

기술혁신형 중소기업(Inno-Biz) 확인서

제 200301 - 00308 호

업 체 명 : 주식회사 비엠아이
대 표 자 : 이상준
주 소 : 대구달성구 구지면 달성2리 86
등 급 : A
유효기간 : 2020. 4. 3 ~ 2023. 4. 2

위 업체는 기술혁신형 중소기업 육성사업에 의해 선정된 기술혁신형 중소기업(Inno-Biz)임을 확인합니다.

2020년 4월 3일
중소벤처기업부장
김양민

<이노비즈확인서>

벤처기업확인서

제 2000101359 호

업 체 명 : (주)비엠아이
대 표 자 : 이상준
소 재 지 : 대구광역시 달성군 구지면 달성2리 86 주식회사 비엠아이
확인 유형 : 기술보증기금(기술보증기금)
평 가 관 : 기술보증기금
유효기간 : 2020년02월19일 ~ 2022년02월12일

위 업체는 벤처기업육성에관한특별조치법 제25조의 규정에 의하여 벤처기업임을 확인합니다.

2020년 02월 19일
KIBO 기술보증기금 이사장
김양민

<벤처기업확인서>

THANK YOU.