



# COMPANY PROFILE

**BMI**

BEST. MACHINERY. INNOVATOR.

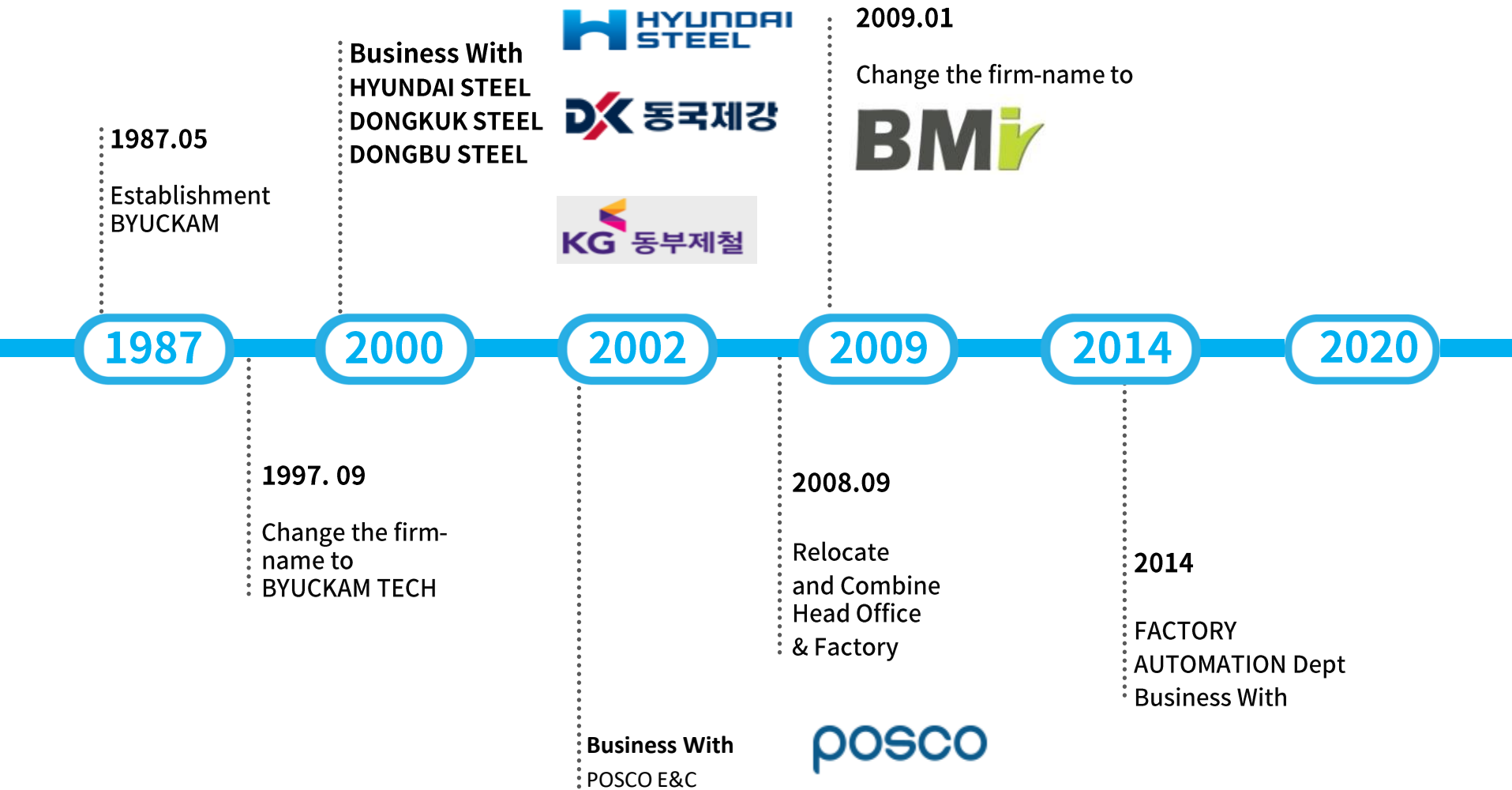
# 01

## COMPANY INTRODUCTION

**BMI**

BEST. MACHINERY. INNOVATOR.

# KEY FACTS ABOUT BMI



## 회사 조직

Our company is the company being specialized in the iron manufacturing facility and having fabricated and delivered various facilities to the local and overseas ironworks for more than 30 years since the establishment in 1987. It launched the Automation Business Division in 2015 to become the developing technology specialty company. It is fabricating and delivering the engine, transmission, and secondary battery facilities to local and overseas companies. It makes a preparation step by step and advances to contribute to the smart factory of the future ironworks on the basis of the experience in the iron manufacturing and automation facilities.



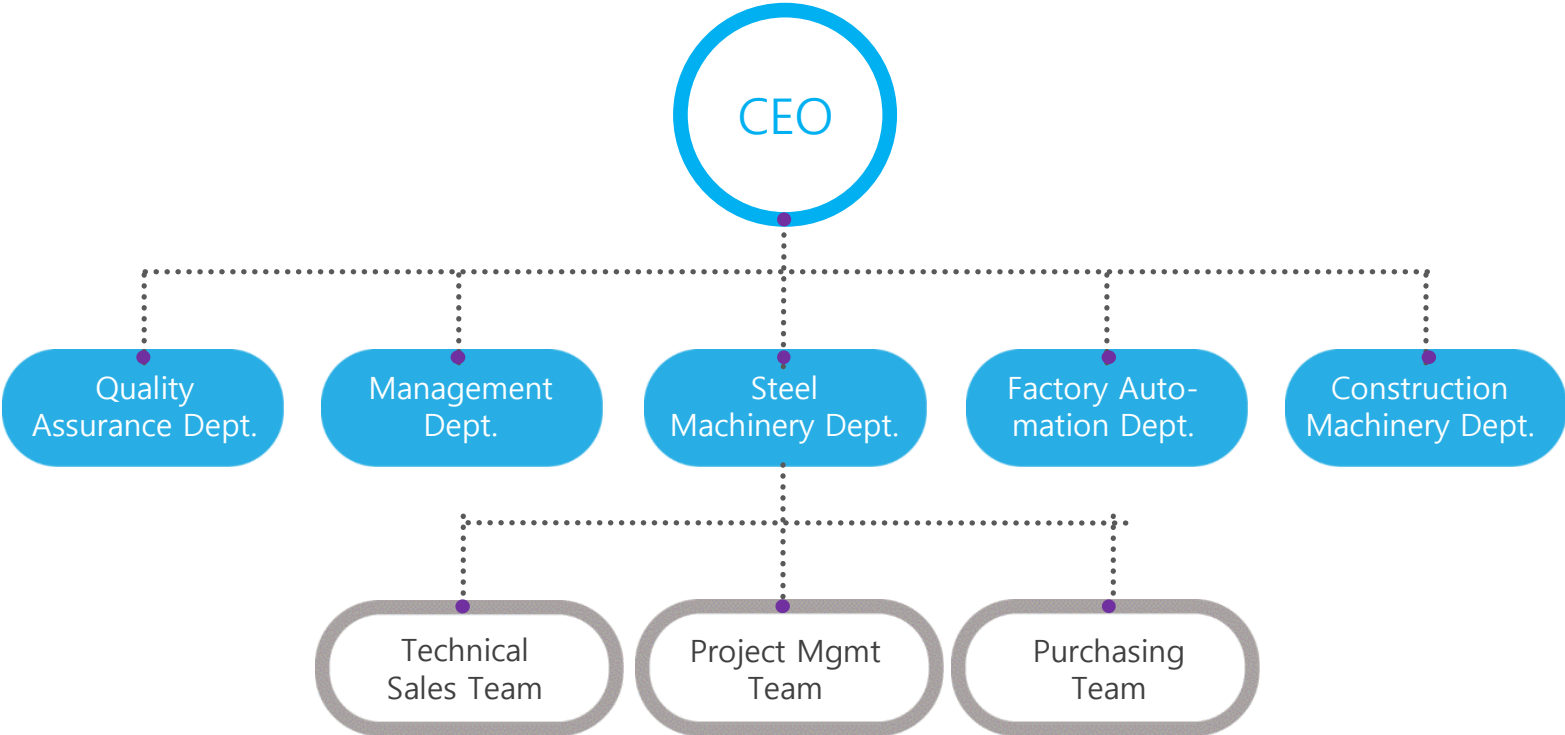
**01** Steel Machinery Dept.

**02** Factory Automation Dept.

**03** Construction Machinery Dept.

**04** Management Dept.

# ORGANIZATION CHART



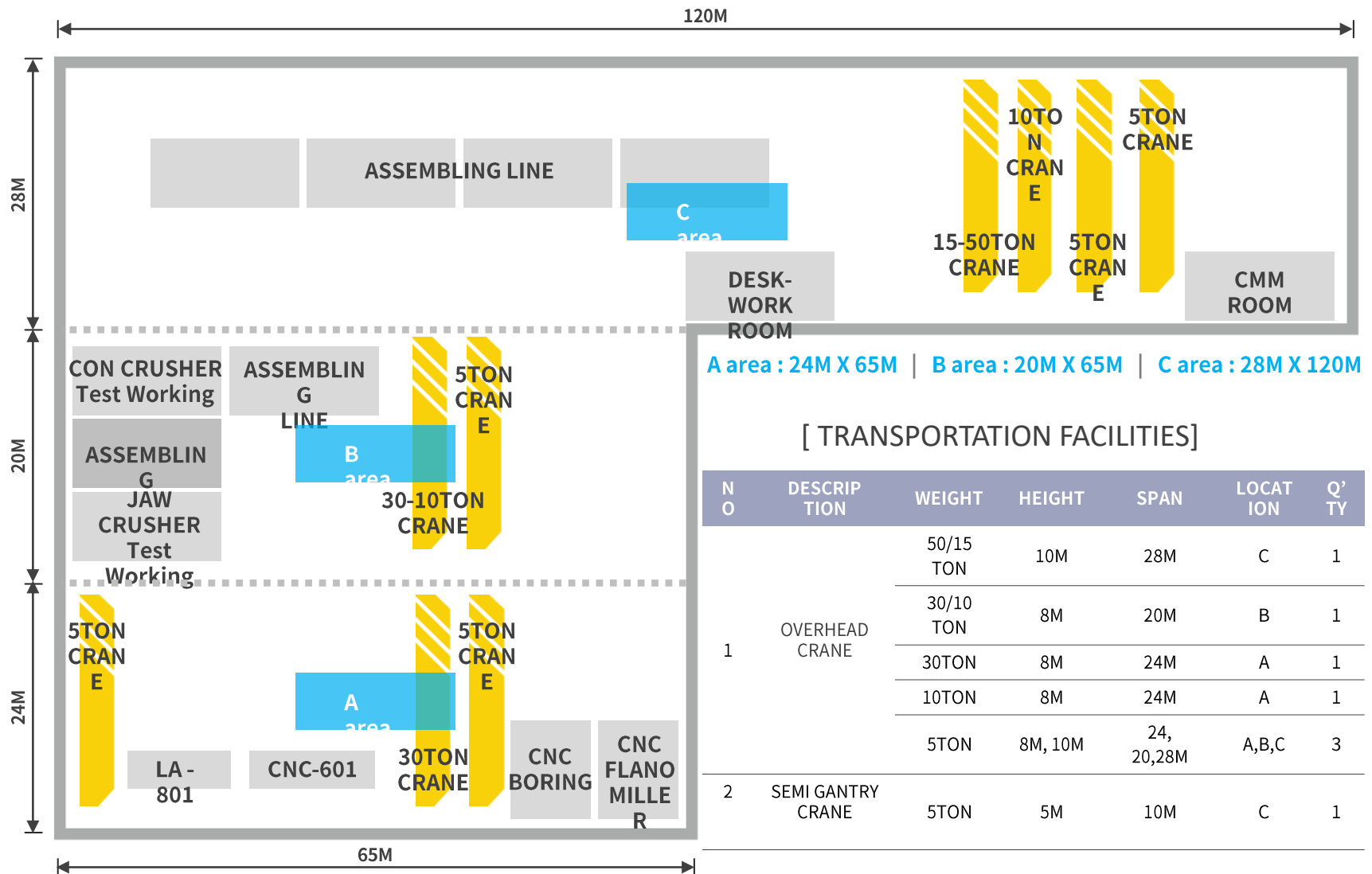
02

FACILITIES STATE

BMI

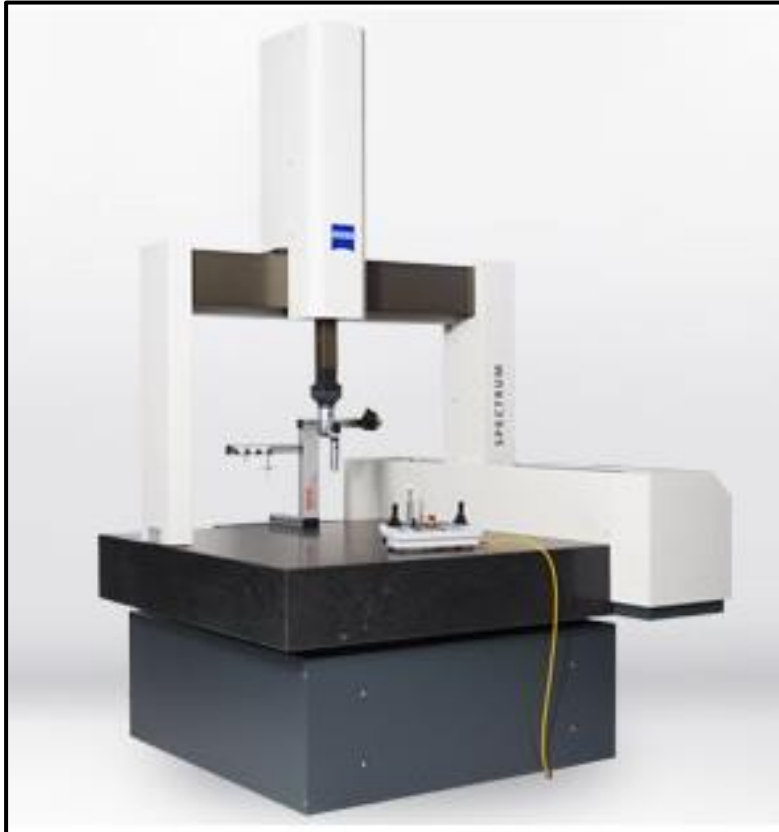
BEST. MACHINERY. INNOVATOR.

# FACTORY LAYOUT



# FACILITIES STATES

## COORDINATE MEASUREMENT MACHINE (3D)



1. MAKER	ZEISS, GERMAN
2. MACHINE NAME	CONTURA G2
3. MEASURING RANGE	X = 1000 mm (39.3 in) Y = 1200 mm (47.2 in) Z = 600 mm (23.6 in)
4. ISO 10360-2	MPE_E = $(1.8 + L/350) \mu\text{m}$
5. PROBE	XDT TL3



# FACILITIES STATES

## VERTICAL MACHINING CENTER



1. MAKER	DOOSAN, Korea
2. MACHINE NAME	MYNX 7500
3. TRAVEL	X = 1525 mm (60 in) Y = 762 mm (30 in) Z = 625 mm (24.6 in)
4. TABLE SIZE	1600 x 750 mm
5. MAX. SPINDLE SPEED	8,000 r/min
6. MAX. SPINDLE POWER	22 KW

# FACILITIES STATES



Planer machine  
(5000 × 2500 × 1700)



CNC Boring machine  
(D160 × 7000 × 2500 × 900)

# 03

**RECORD**

**BMI**  
BEST. MACHINERY. INNOVATOR.

# CURRENT RECORD(INTERNAL)

2019

NO	EQUIPMENT	Q'TY	CUSTOMER	YEAR
1	1Hot Strip Mill F2,3 Stripper frame Ass'y	1SET	HYUNDAI STEEL	2019
2	2Hot Strip Mill SSP Air Clutch	SET		
3	Hot Strip Mill Heating Furnace Top Lintel	SET		
4	Heavy Plate Mill Turntable Roll	2EA		
5	Heavy Section BlackDownMill Front MANIPULATOR	1SET		
6	Heavy Section Mill Saw Clamping Device	1SET		
7	ROLL Production Horizontality Bottom Flask	2EA		
8	Section Mill Run In Roller	2SET		
9	Section Mill 120T Weighing Table	SET		
10	Plate Mill SEGMENT FRAME	SET	HYUNDAI ROTEM	
11	CCM ROLLER BENDER FRAME For Fast Casting	5SET		
12	WITHDRAWAL FRAME ASS'Y(Straightener )	2SET	SEAHBE STEEL	
13	Heavy Plate Mill BLOOM TURNER	2SET		
14	FM Spindle Wobbler	2EA	DONGKUK STEEL	
15	IMR SHIFTING SYSTEM OVERHAUL	SET	DONGBU STEEL	
16	Steel Manufacture BILLET MOLD	SET	POSCO E&C	

# CURRENT RECORD(INTERNAL)

2020

NO	EQUIPMENT	Q'TY	CUSTOMER	YEAR
1	Heavy Section RTM Guide change Platform SET	1SET	HYUNDAI STEEL	2020
2	Heavy Section In, Out Side Guide SET	2SET		
3	Section Mill 100T Support Frame	3EA		
4	Section Mill 80T Mold OSC Frame	1SET		
5	Section Mill 120T LF Refining Car ASS'Y	1SET		
6	Raw Material Drive Shaft SET	2SET		
7	STRIPPER ASS'Y	1SET		
8	Coil Box Bending Roll Frame ASS'Y	1SET		
9	Coil Box Leveller Roll Frame ASS'Y	1SET		
10	Coil Box Cradle Roll Frame ASS'Y	1SET		
11	FM Side Guide ASS'Y	1SET		
12	Plate Mill Segment Frame	15SET	HYUNDAI ROTEM	
13	Plate Mill Segment Frame	2EA	DONGKUK STEEL	
14	CCM Machine	22EA	POSCO E&C	
15	Bloom Turner	2SET	SEAHBE STEEL	
16	Cold Leveller Roll ASS'Y	1SET	DKC STEEL	

# CURRENT RECORD(INTERNAL)

2021

NO	EQUIPMENT	Q'TY	CUSTOMER	YEAR
1	1Hot Strip Mill FM Side Guide ASS'Y	1SET	HYUNDAI STEEL	2021
2	1Hot Strip Mill F1 STRIPPER FRAME ASSY	1SET		
3	1Hot Strip Mill Coil Box Cradle Roll Frame ASS'Y	1SET		
4	FM Work Roll Chock Ass'y	1SET		
5	Coil Box Cradle Roll Frame ASS'Y	1SET		
6	1Hot Strip Mill FSB FRAME ASSY	1SET		
7	2Hot Strip Mill R1 STRIPPER&FEEDROLL	1SET		
8	Large Rolling RTM V CHOCK	1SET		
9	BEARING HOUSING	1SET		
10	1Hot Strip Mill F3 SIDE GUIDE FRAME ASSY	1SET		
11	2Hot Strip Mill R2 SLED	1SET		
12	2Hot Strip Mill E2 ROLL ADJUST ASSY	1SET		
13	BAR BREAKER ASS'Y	2EA	DAEHAN STEEL	
14	NO1 SEGMENT	1SET	DONGKUK STEEL	
15	FM Top Spindle Support Arm & LINK	2EA		
16	SKI LIFT ASS'Y		HANWHA	

# CURRENT RECORD(INTERNAL)

2022

NO	EQUIPMENT	Q'TY	CUSTOMER	YEAR
1	SAW LINE TOOL REPLACEMENT SAFETY CONSTRUCTION	1SET		
2	1Hot Strip Mill CROP SHEAR KNIFE DRUM	1SET		
3	2Hot Strip Mill FSB FRAEM	1SET		
4	2Hot Strip Mill FM ENTRY FASSLINE ADJUSTMENT DEVICE ASSY	1SET		
5	Electric Furnace Upper Frame Replacement	1SET		
6	1Hot Strip Mill F7 SIDE GUIDE FRAME ASS'Y	1SET	HYUNDAI STEEL	
7	1Hot Strip Mill SSP HOLD DOWN ROLL (TOP,BOTTOM)	1SET		
8	120T BB3525 SEGMENT No1,2 Set	1SET		
9	FEED ROLL & HOUSIN	1SET		2022
10	1Hot Strip Mill FM FASSLINE ADJUSTENT DEVICE ASSY	1SET		
11	21YEAR CDQ , MOVABLE PLATFORM	1SET	HYUNDAI ROTEM	
12	BLM2 CONTINUOUS CASTING Withdrawal Assy	1SET	SEAHBE STEEL	
13	DKC OIL PRESSURE BRACE OVERHAUL	2EA	DKC STEEL	
14	STEEL VAR GENERAL STEEL RATIONALIZATION Roll Guide Part	1SET		
15	STEEL MANUFACTURE CONTINUOUS CASTING ROLLER APRON	2EA	DONGKUK STEEL	
16	JEM903-90041 JFE CHIBA COLD-ROLLED EQUIPMENT	1SET	BK ENG	

# CURRENT RECORD(OVERSEAS)

2008-2022

NO	EQUIPMENT	Q'TY	CCUTOMER	YEAR
1	SEGMENT ROLLER SHAFT	160SET	NAKORN THAI STRIP MILL / THAILAND	2008
2	KNIFE DRUM	4SET	G-STEEL/ THAILAND	
3	RTB ROLLER & ROLLER ASS'Y	20SET	HYOGO/ JAPAN	2009
4	TABLE ROLL	20SET	NIPPON STEEL CORPORATION/ JAPAN	2010
5	KEEPER PLATE AND WEDGE LINER	6SET	SIAM YAMATO STEEL / THAILAND	
6	PINCH ROLL FOR BOTTOM	2SET	SAHAVIRIYA / THAILAND	2011
7	WORM GEAR SCREW DOWN ASS'Y	2SET	SIAM YAMATO STEEL / THAILAND	2012
8	CRANK SHAFT RACK-KEY TYPE	3SET	SAHAVIRIYA / THAILAND	
9	V-SCREW SHAFT & NUT	2SET	SIAM YAMATO STEEL / THAILAND	2013
10	SYS CRANK SHAFT & SCREW SET	2SET	SIAM YAMATO STEEL / THAILAND	2014
11	CHOCK & MANDREL SEGMENT	1SET	World-Trade & Engineering/ MALAYSIA	2016
12	CRANK SHAFT & PENDULUM FRAME	4SET	G-STEEL / THAILAND	2017
13	Water cooled brakets	5SET	MISIMACOSAN / JAPAN	2018
14	SYS BB400 SEGMENT ASS'Y	4SET	SIAM YAMATO STEEL / THAILAND	
15	UR MILL YOKE ASS'Y	1SET	G-STEEL / THAILAND	
16	MANDREL SEGMENT	4SET	World-Trade & Engineering / MALAYSIA	2019
17	CGL UACJ #1 CALP	1SET	BK ENG(SPCO) / JAPAN	
18	SECTION MILL SEGMENT FRAME	2EA	SIAM YAMATO STEEL / THAILAND	2020
19	STATIC CAST CHOCK SET	1SET	Atlas Machine & Supply, Inc./USA	2021
20	COMAU ARCH & Z COMPLIANCE	1SET	COMAU USA/ USA	



# 04

## STEEL MANUFACTURE MACHINERY Dept.

MAKING STEEL PLANT

CONTINUOUS CASTING PLANT

PLATE MILL LINE

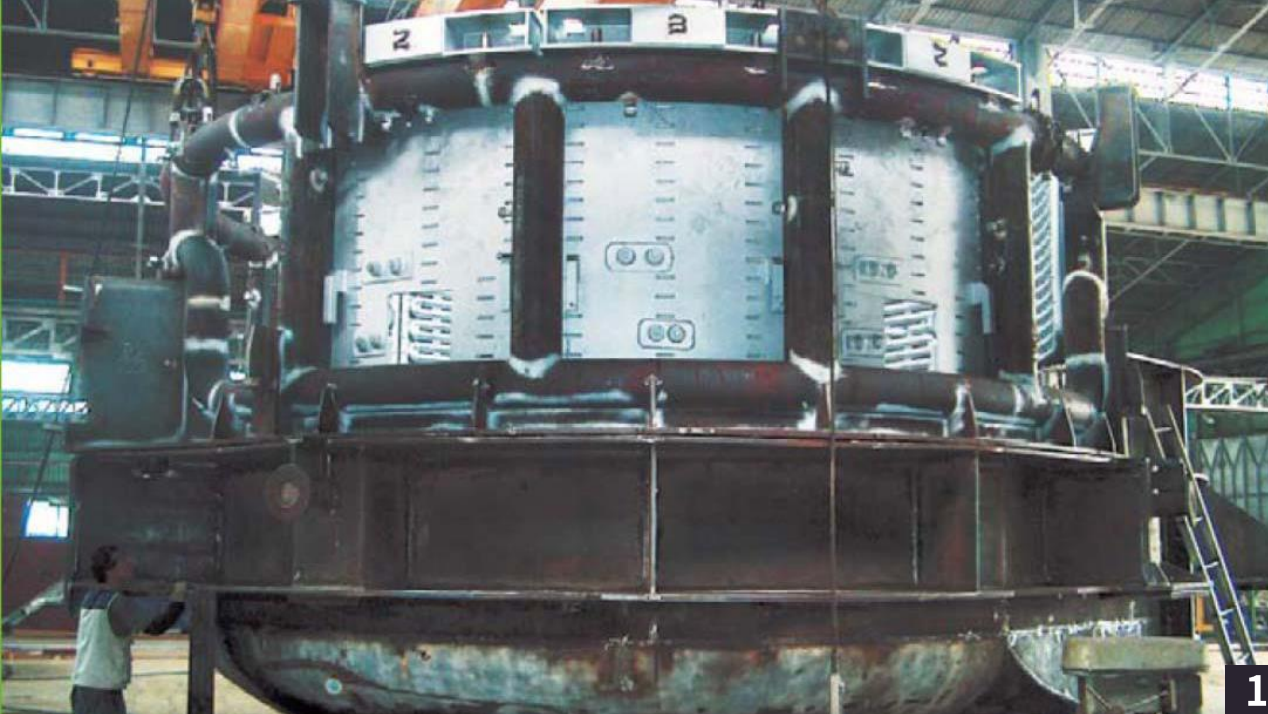
HOT STRIP MILL LINE

SECTION MILL LINE

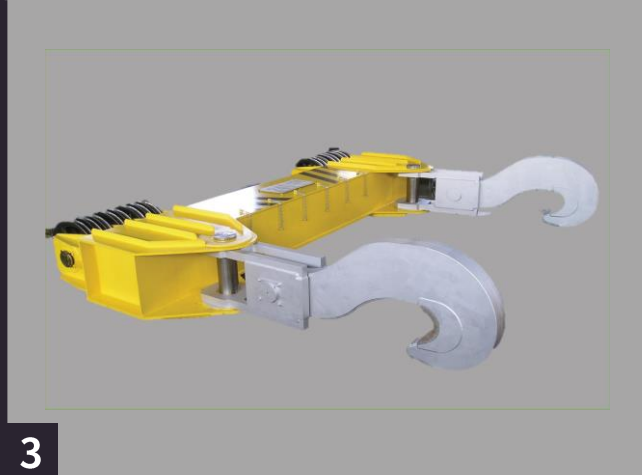


**1** 150Ton Electric Furnace  
**2** 80Ton Electric Furnace Gantry  
**3** 120Ton LF Roof Mast  
**4** 80Ton Electric Furnace Low Shell

## MAKING STEEL PLANT



1  
2



3



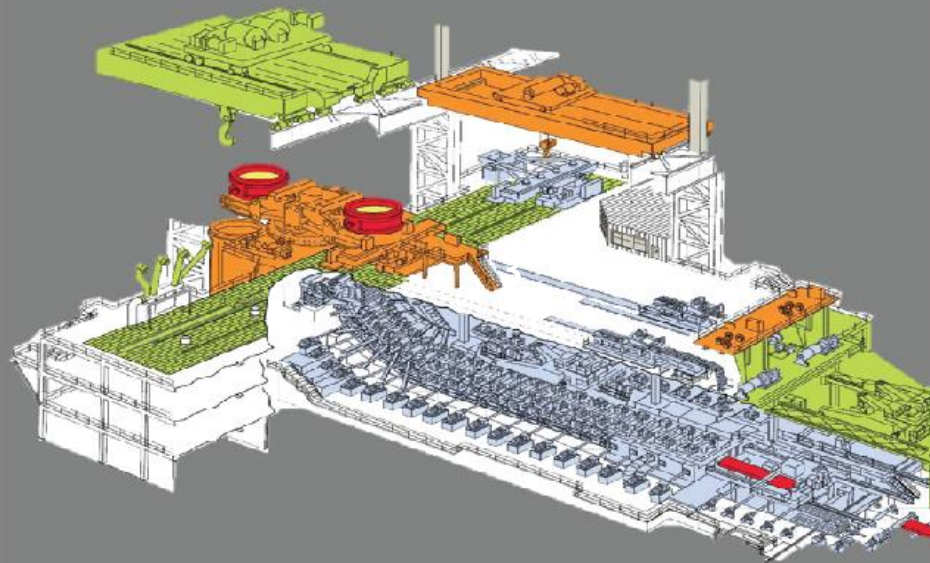
4

## MAKING STEEL PLANT

1. 100Ton Electric Furnace
2. 100Ton Electric Furnace Top Shell
3. 120Ton Laminated Hook
4. 75Ton EAF Transfer Car

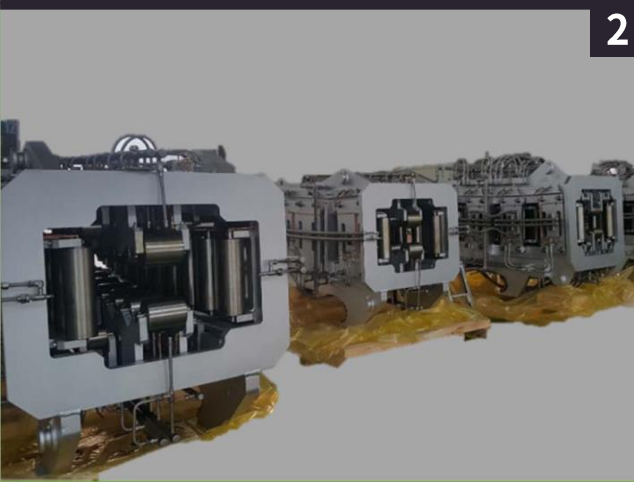


1



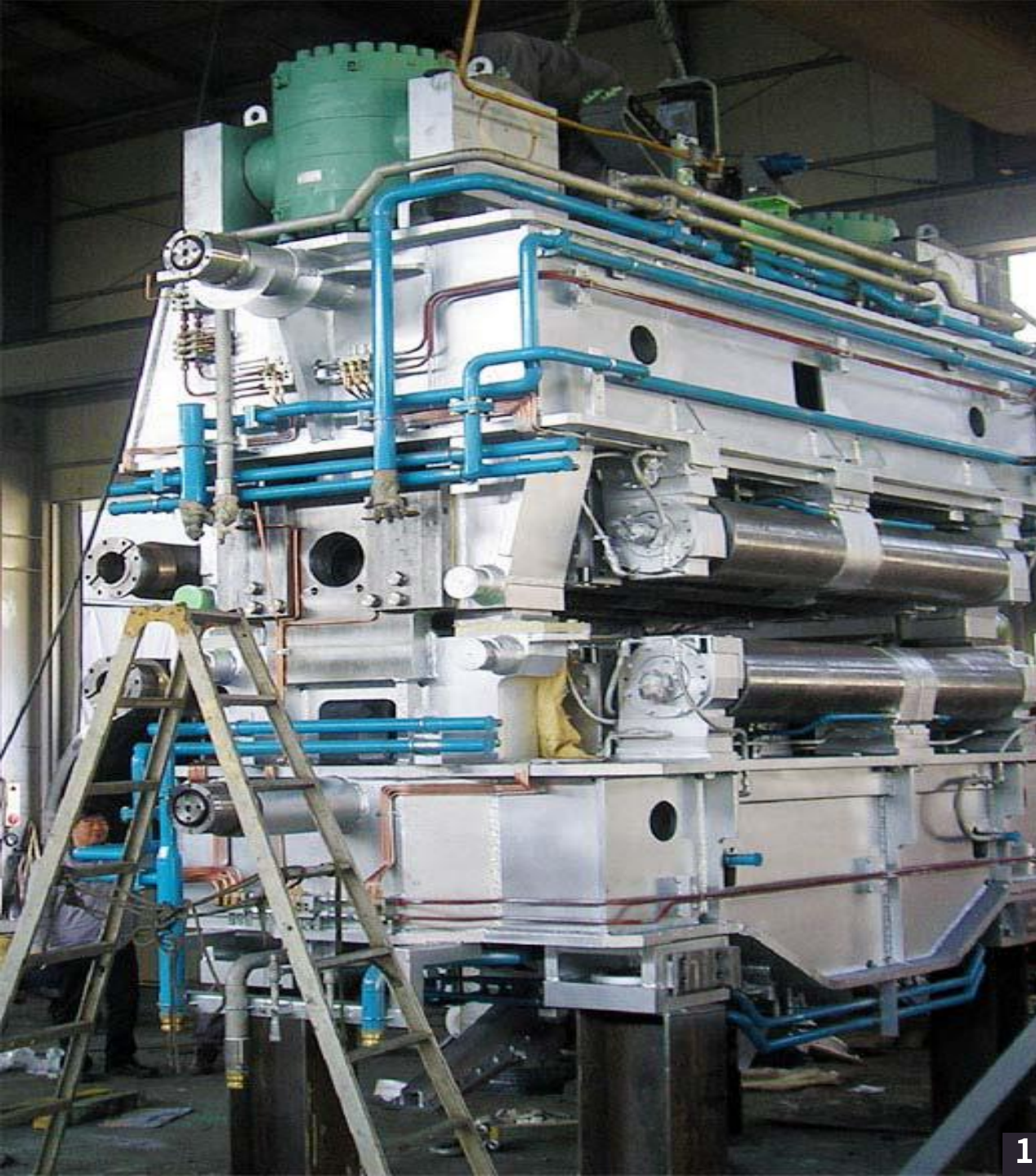
2

3



## CONTINUOUS CASTING PLANT

1. Slab Dummy Bar
2. 400x520x140 Beam Blank Segment
3. Mould & Oscillator Localization (POSCO)



2

3

## CONTINUOUS CASTING PLANT

1. Slab Segment
2. Discharger Roller Table
3. Withdrawl & Straightening Equipment

1



## Hot Strip Mill

1. FM ORP Frame Ass'y
2. FM Side Frame Ass'y



## Hot Strip Mill

1. Down Coil Line Design  
Production Installstion
2. Charging Rack Bar Ass'y
3. FSB Frame Ass'y
4. WR Changing Device Ass'y



1

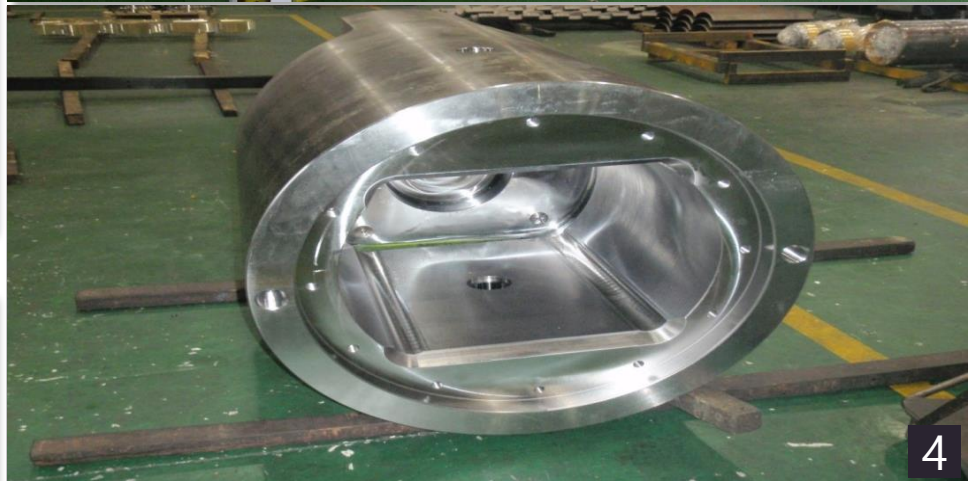
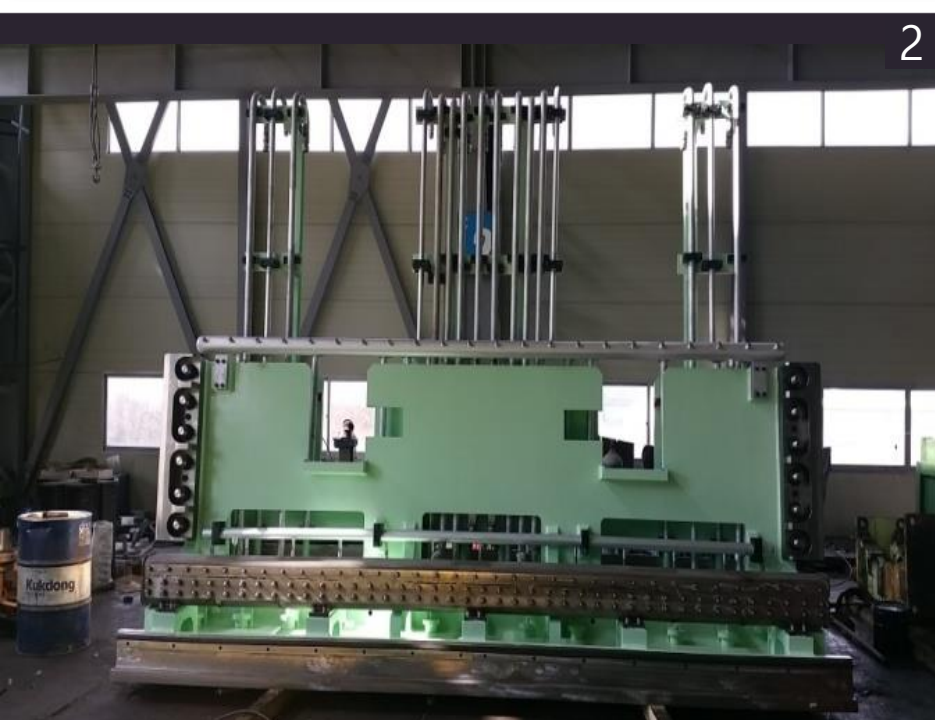
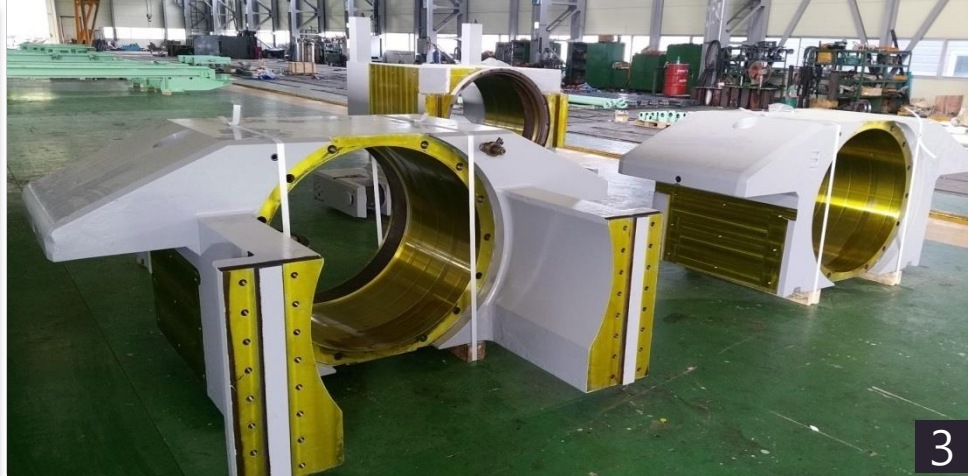


2

## Plate Mill Line

1. Roller Table Ass'y
2. FM Feed Roller Ass'y





## PLATE MILL LINE

1. Hot Leveller Cassette Ass'y
2. FM Mill Guide Ass'y
3. Work Roll Chock
4. Work Roll Coupling



## Section Mill Line

1. Roughing & Finishing Train(1,000ton)

## SDI Segment Frame

1. Loose Side Segment
2. Fixed Side Segment



1



2

## F6 Stripper Ass'y

1. Top Stripper Ass'y
2. Bottom Stripper Ass'y

1



2



## Section Mill 120T LF Refining Car Ass'y

1. Section Mill 120T LF Refining Car Ass'y



# FM Side Guide Ass'y

1. FM Side Guide Ass'y





## Coil Box Roll Frame

1. Coil Box Bending Roll Frame Ass'y
2. Coil Box Leveller Roll Frame Ass'y
3. Coil Box Cradle Roll Frame Ass'y

# Posco E&C CCM Machine

1. Posco E&C CCM Machine



1



1



1



**THANK YOU.**